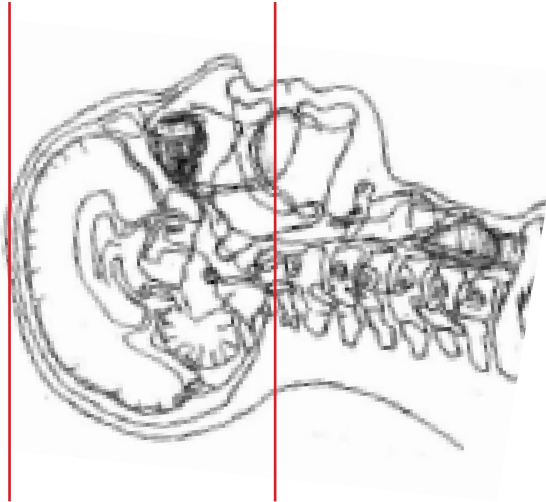
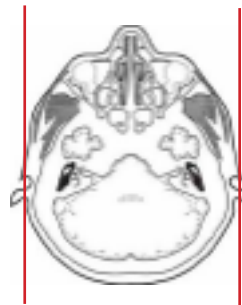
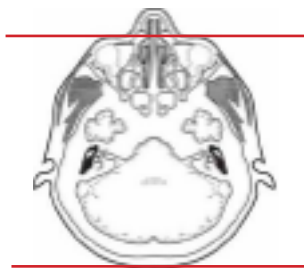


### CT Brain Without and With Contrast



<b>Pt Position</b>	Supine IOML perpendicular to table
<b>Contrast</b>	100 mL at 2.0 mL/sec
<b>Injection Rate</b>	Inject, 5 minute delay to scan post contrast
<b>Respiration</b>	Breath - hold
<b>Volume Acquisition Specs</b>	Appropriate to achieve images as specified in the following tables Head SFOV



PLANE	ALGORITHM	THICKNESS	DFOV
Axial	Brain	5.0 mm	approx 220 mm
Axial	Bone	5.0 mm	approx 220 mm
Coronal	Brain	5.0 mm	approx 220 mm
Sagittal	Brain	5.0 mm	approx 220 mm
<b>**Inject Contrast**</b>		5 Minute delay before scanning	
Axial	Brain	5.0 mm	approx 220 mm
Coronal	Brain	5.0 mm	approx 220 mm
Sagittal	Brain	5.0 mm	approx 220 mm

**NOTES:**

\*IOML perpendicular is optimal for potential reconstruction

