

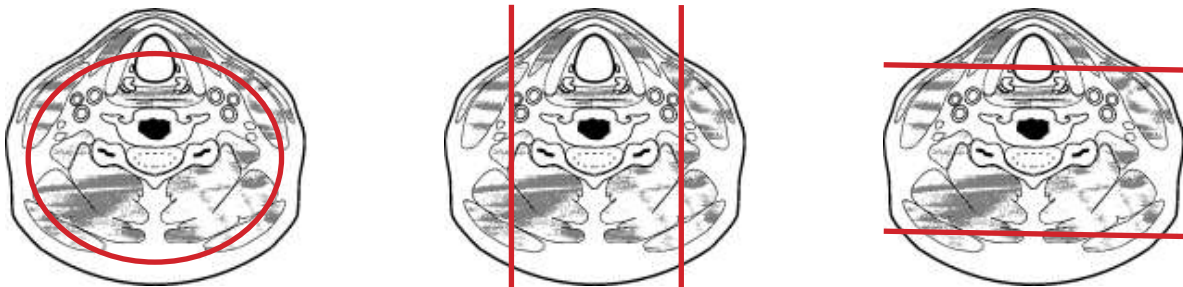
### CT Cervical Spine With IV Contrast



<b>Pt Position</b>	Supine IOML perpendicular to table
<b>Contrast</b>	75 mL
<b>Injection Rate</b>	0.8 mL/sec, 90 sec delay
<b>Respiration</b>	Breath - hold
<b>Volume Acquisition Specs</b>	Appropriate to achieve images as specified in the following tables Small FOV

-sella to T3

CT of the spine with contrast has limited applications, primarily for patients who are unable to have an MRI exam or for patients with prior hardware placement. All other indications should be discussed with radiologists and/or ordering physician as to why MRI exam would not be a more optimal exam for evaluation of malignancy, infection or disc disease



PLANE	ALGORITHM	THICKNESS	DFOV	
Axial +C	Bone	3.0 mm	approx 140 mm	
Axial +C	Soft Tissue	3.0 mm	approx 140 mm	
Coronal +C	Bone	3.0 mm	approx 140 mm	reformat
Sagittal +C	Bone	3.0 mm	approx 140 mm	reformat

**NOTES:**

- IOML perpendicular is optimal for potential reconstruction
- LMP on pts of child-bearing age
- Shield children when possible