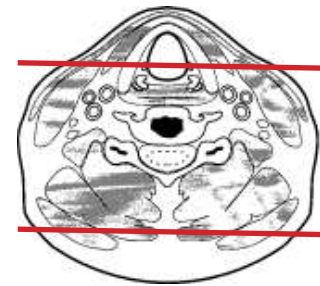
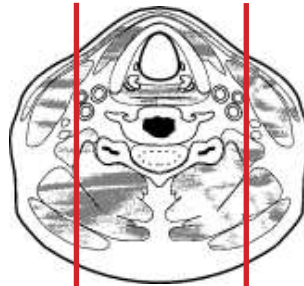
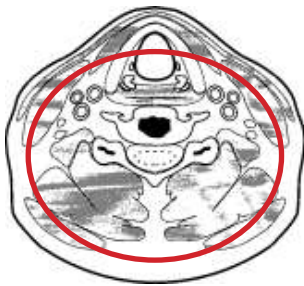


CT Cervical Spine Without IV Contrast



Pt Position	Supine IOML perpendicular to table
Contrast	None
Injection Rate	N/A
Respiration	Breath - hold
Volume Acquisition Specs	Appropriate to achieve images as specified in the following tables Small FOV -sella to T3

If CT C-T-L spine ordered, do as separate scans and use appropriate FOV for each area of spine



PLANE	ALGORITHM	THICKNESS	DFOV	
Axial	Bone	3.0 mm	approx 140 mm	
Axial	Soft Tissue	3.0 mm	approx 140 mm	
Coronal	Bone	3.0 mm	approx 140 mm	reformat
Sagittal	Bone	3.0 mm	approx 140 mm	reformat

NOTES:

- IOML perpendicular is optimal for potential reconstruction
- LMP on pts of child-bearing age
- Shield children when possible