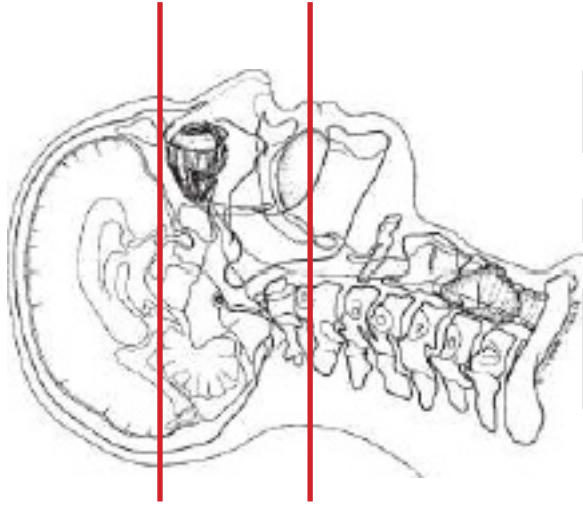
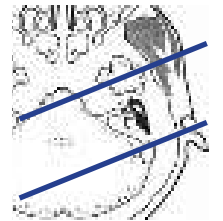
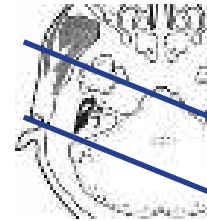
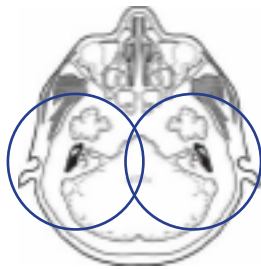
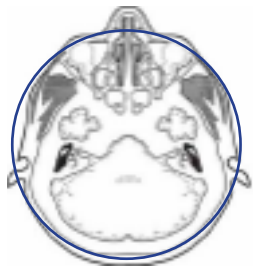


CT IAC / TEMPORAL BONE PROTOCOL



Pt Position	Supine IOML perpendicular to table
Contrast	None
Injection Rate	N/A
Respiration	Breath - hold
Volume Aquisition Specs	Appropriate to achieve images as specified in the following tables Head SFOV



Topogram - Scout				
PLANE	ALGORITHM	THICKNESS	DFOV	
Axial	Soft Tissue	2.0 mm	approx 180 mm	Above sella through hard palate
R. Axial	Bone	1.0 mm	approx 89-90 mm	
L. Axial	Bone	1.0 mm	approx 89-90 mm	
R. Coronal	Bone	1.0 mm	approx 89-90 mm	MPR reformat TMJ through IAC
L. Coronal	Bone	1.0 mm	approx 89-90 mm	
R. Sagittal	Bone	1.0 mm	approx 89-90 mm	MPR reformat Anterior to TMJ through IAC parallel to IAC
L. Sagittal	Bone	1.0 mm	approx 89-90 mm	

NOTES:

- IOML perpendicular is optimal for potential reconstruction
- LMP on pts of childbreaing age
- Shield children