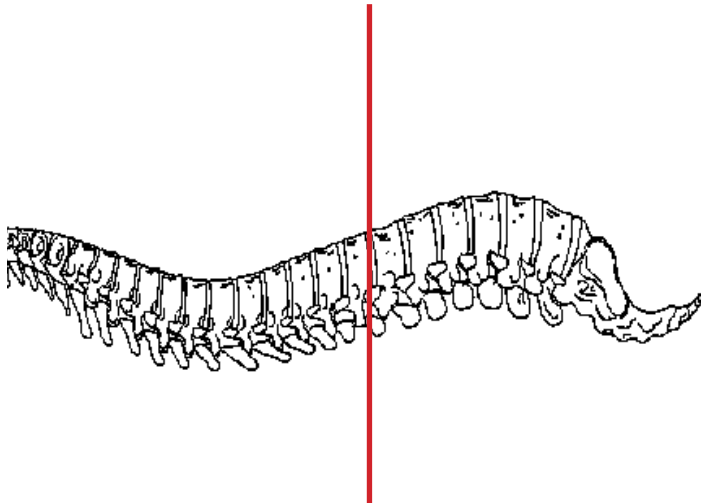
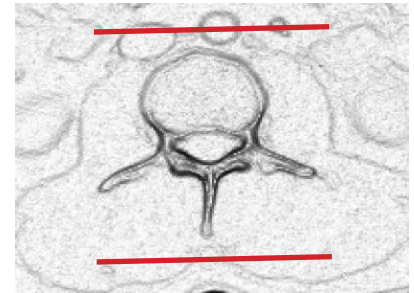
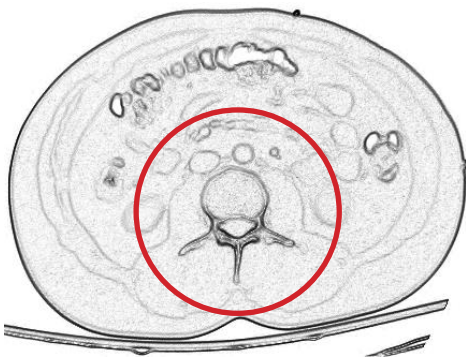


CT Lumbar Spine With IV Contrast



Pt Position	Supine
Contrast	100 mL
Injection Rate	1 mL/sec, 90 sec delay
Respiration	Quiet breathing
Volume	Appropriate to achieve images as specified in the following tables
Aquisition Specs	Small FOV
	T 11/12 to tip of coccyx

CT of the spine with contrast has limited applications, primarily for patients who are unable to have an MRI exam or for patients with prior hardware placement. All other indications should be discussed with radiologists and/or ordering physician as to why MRI exam would not be a more optimal exam for evaluation of malignancy, infection or disc disease



PLANE	ALGORITHM	THICKNESS	DFOV	
Axial +C	Bone	3.0 mm	approx 180 mm	
Axial +C	Soft Tissue	3.0 mm	approx 180 mm	
Coronal +C	Bone		approx 180 mm	reformat
Sagittal +C	Bone		approx 180 mm	reformat

NOTES:

- LMP on pts of child-bearing age
- Shield children when possible