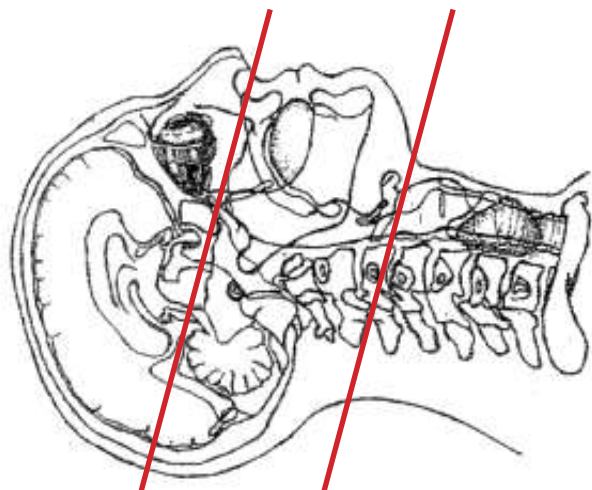


CT Parotid / Submandibular Gland with IV Contrast



Pt Position	Supine IOML perpendicular to table
Contrast	100 mL contrast
Injection Rate	2.5 mL/sec minimum 22g
Respiration	Breath - hold no swallowing
Volume Acquisition Specs	Appropriate to achieve images as specified in the following tables Head FOV Suborbital cavity to hyoid bone

Topogram - Scout					
PLANE	ALGORITHM	THICKNESS	INTERVAL	DFOV	
Axial +C	Soft Tissue	1.5 mm		160-180 mm	
Coronal +C	Soft Tissue	2.0 mm		160-180 mm	reformat
Sagittal +C	Soft Tissue	2.0 mm		160-180 mm	reformat

- NOTES:**
- IOML perpendicular is optimal for potential reconstruction
 - LMP on pts of child-bearing age
 - Shield children when possible