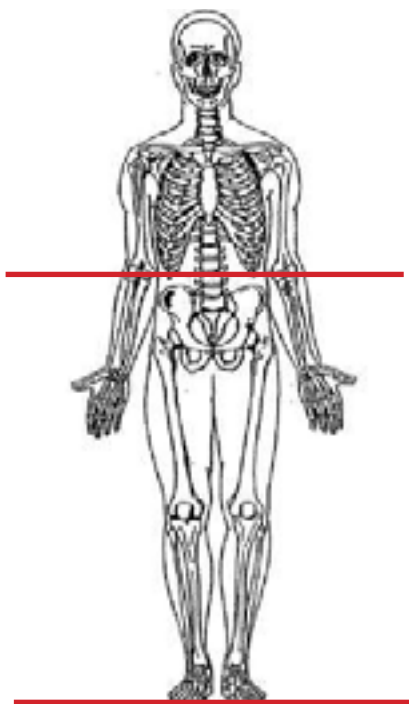


### CTA Lower Extremity



<b>Pt Position</b>	Supine
<b>Contrast</b>	150 mL contrast
<b>Injection Rate</b>	3.5 mL/sec minimum 20g prefer 18g
<b>Respiration</b>	Breathhold Inspiration
<b>Volume Acquisition Specs</b>	Appropriate to achieve images as specified in the following tables

Bifurcation to toes  
ROI - descending aorta



Topogram - Scout						
PLANE	ALGO-RITHM	THICK-NESS	INTERVAL	DFOV	Area	
Axial	Soft Tissue	5.0		pt size + 4 cm	bifurcation to toes	pre-contrast
Axial +C	Soft Tissue	3.0 mm		pt size + 4cm	bifurcation to below knees	2 scans ensure contrast to the feet
Axial +C	Soft Tissue	3.0 mm		pt size + 4cm	above knees to toes	
Coronal and Sagittal +C	Soft Tissue	3.0 mm	3.0 mm	pt size + 4cm	Upper Leg	MPR reformat
Coronal and Sagittal +C	Soft Tissue	3.0 mm	3.0 mm	pt size + 4cm	Lower Leg	MPR reformat
Coronal and Sagittal +C	Soft Tissue	8.0 mm	5.0 mm	pt size + 4cm	Upper Leg	MIP reformat
Coronal and Sagittal +C	Soft Tissue	8.0 mm	5.0 mm	pt size + 4cm	Lower Leg	MIP reformat

**NOTES:**

- LMP on pts of child-bearing age
- Shield children when possible
- Follow GFR and metformin protocol for contrast studies