

MRI BREAST IMPLANTS (R/O RUPTURE)

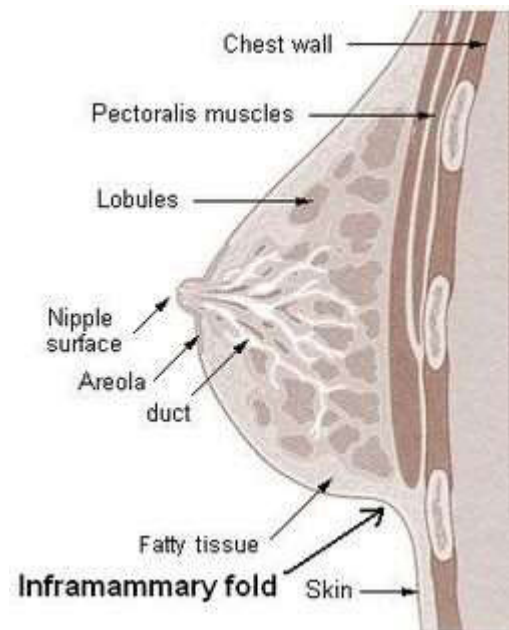
Scan Range

FOV fit to patient

Patient Position

Localizer 3 plane scout

Plane	Sequence	Fat Sat	Mode	SLT / SP	FOV	NS	GAP	NAQ
Axial	STIR	N		4 mm	36x25	40	0.8	1
Axial	SILICONE SUP			4 mm	36x25	40	0.8	1
Axial	SALINE SUP			4 mm	34x26	79	0.8	1
Axial	SALINE/ FAT SUP			4 mm	34x26	79	0.8	1



SPECIAL INSTRUCTIONS

- Menstrual cycle 5-15 days for routine patients or follow-ups
- Positioning is KEY to breast exam dictation. Ensure there is no inframammary fold at the bottom of the breast. No extreme compression, sharp edges, or folds in breast tissue.
- **NO BELLY SKIN BULGE – PULL BREAST STRAIGHT FOR 90 DEGREE ANGLE**