

MRI FOOT - WHOLE FOOT WO/WITH CONTRAST

Patient Position Supine - place pt foot in coil so that metatarsals are near center, if possible. Remove socks or stockings, if any.

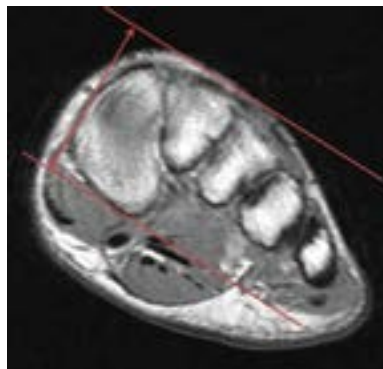
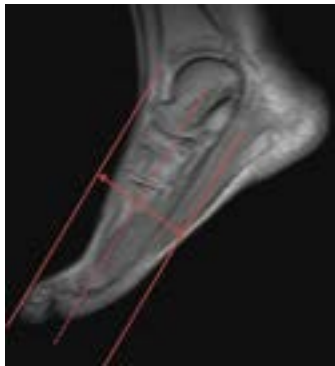
Localizer 3 - plane scout localizer

Plane	Sequence	Fat Sat	SLT / SP	**FOV	Notes
Sagittal	T1			small FOV	
Axial	T1			small FOV	
Coronal	T2	Y		small FOV	
Sagittal	STIR			small FOV	
Axial	PD	Y		small FOV	
Coronal	T1	Y		small FOV	
Coronal +C	T1	Y		small FOV	
Sagittal +C	T1	Y		small FOV	

Indications: general pain, mid-foot pain

**Increase FOV if needed for pt size/pathology

POSITIONING AND PLANES



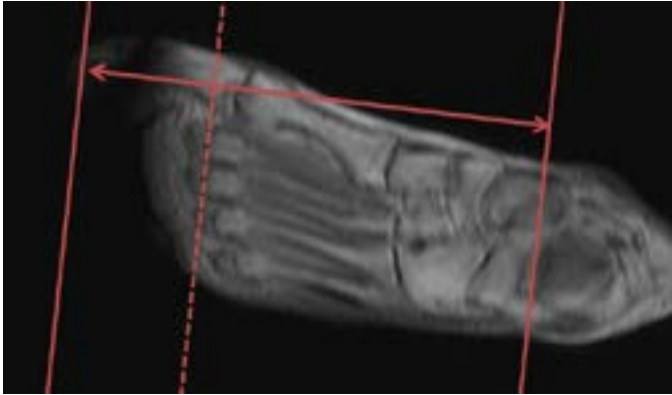
Prescribe AXIALS off sagittal and coronal scout

Example resulting image

AXIALS - LONG AXIS

- Use Sag LOC and angle parallel to the shaft of either the 2nd or 3rd metatarsals and at least cover the soft issues superior and inferior to the MTP joints
- Cover all of the toes and as far proximal as the field of view allows. THIS SHOULD BE TO THE TARSAL BONES
- Angle parallel to the TOP LINE of the 2nd and 3rd metatarsal necks

POSITIONING AND PLANES



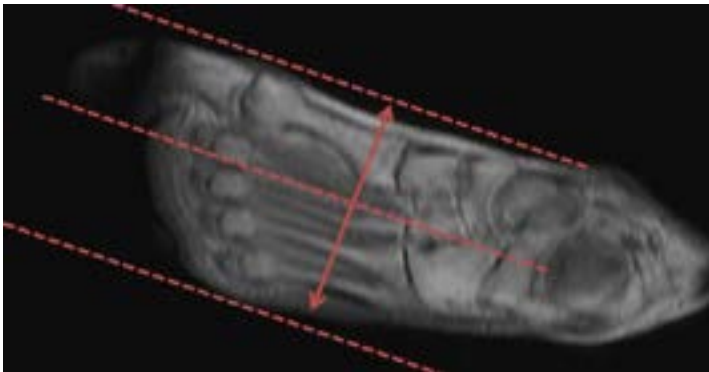
Prescribe CORONAL off axial plane



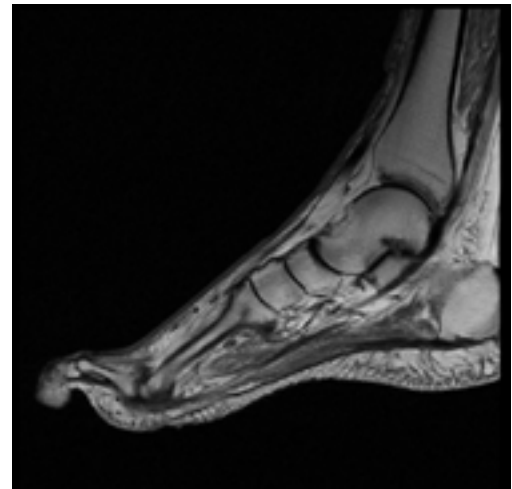
Example resulting image

CORONAL - SHORT AXIS

- Perpendicular to Axial - long axis
- Angled parallel to 2nd MTP joint or perpendicular to 2nd metatarsal shaft
- Cover at least to the talonavicular joint



Prescribe SAGITTAL off axial plane



Example resulting image

SAGITTAL

- Perpendicular to AXIAL and CORONAL
- Parallel to 2nd metatarsal shaft on Axial sequence
- Cover from tips of the toes (if requested) as far proximal as the FOV allows
- Cover from medial margin of 1st MTP joint as far lateral as the slices go (cover all of the MTP joints)