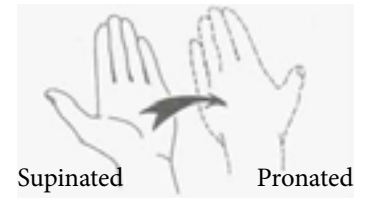


MRI WRIST ARTHROGRAM PROTOCOL



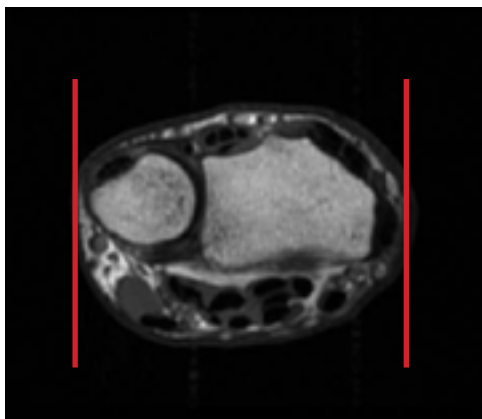
WRIST ARTHROGRAM

Patient Position Try to have wrist pronated and in superman position

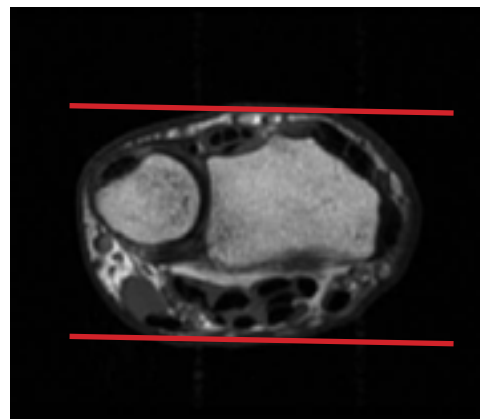
Localizer 3 - plane scout localizer

Plane	Sequence	Fat Sat	SLT / SP	**FOV	Notes
Axial +C	T2	Y	3 mm	8-10 cm	angle parallel to long axis of wrist from cor loc
Axial +C	T1		3 mm	8-10 cm	angle parallel to long axis of wrist from cor loc
Sagittal +C	PD	Y	3 mm	10 cm	perpendicular to axials
Coronal +C	T1	Y	2 mm	10 cm	angle parallel to radius/lunate/capitate alignment
Coronal +C	PD	Y	2 mm	10 cm	angle parallel to radius/lunate/capitate alignment
3D Coronal +C	PD			10 cm	angle parallel to radius/lunate/capitate alignment

** FOV according to pt size



Sagittal Plane



Coronal Plane



Axial Plane