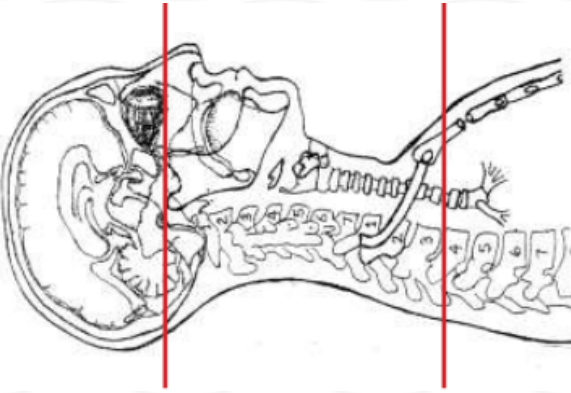


## CT CERVICAL SPINE WITH IV CONTRAST



Indications	CT Cspine with contrast has limited applications primarily for patients where MRI is contraindicated or prior hardware placement. All other indications should be discussed with Radiologist and/or ordering physician as to why MRI would not be more optimal exam for evaluation of malignancy, infection, or disc disease.
Patient position	Supine, IOML perpendicular to table
Contrast	IV = 75 mL
Injection rate	0.8 mL/sec with 90 sec delay
Respiration	Breath hold
Scan parameters	Sella turcica to T3. Use small SFOV



PLANE	ALGORITHM	THICKNESS	DFOV	
Axial + C	Bone	3.0 mm	approx 140 mm	
Axial + C	Soft tissue	3.0 mm		
Coronal & Sagittal + C	Bone	3.0 mm		Reformats

**NOTES:**

- LMP on pts of child-bearing age
- Shield children when possible
- Follow GFR and metformin protocol for contrast studies

Any deviation from protocol MUST be Radiologist approved. Rad Director will be notified if this occurs without prior approval.