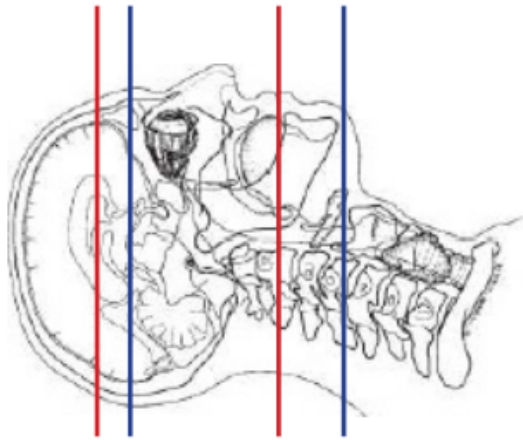
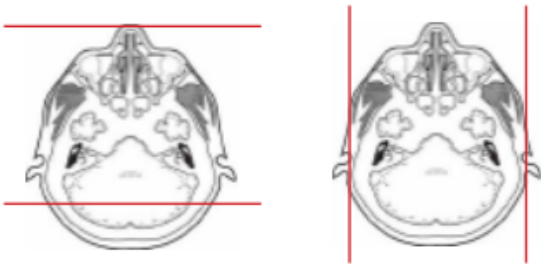


## CT SINUS / FACIAL BONES WITHOUT IV CONTRAST



Indications	Trauma, nasal congestion, polyps.
Patient position	Supine, IOML perpendicular to table
Contrast	NONE
Injection rate	NONE
Respiration	Breath hold
Scan parameters	<b>SINUS: Above frontal sinus through hard palate. Use small SFOV</b>
	<b>FACIAL BONES: Just above orbits through bottom of mandible. Use small SFOV</b>



PLANE	ALGORITHM	THICKNESS	DFOV	
Axial	Soft tissue	2.0 mm	170- 190 mm	
Axial	Bone	2.0 mm		
Coronal	Bone	2.0 mm		Reformats: Frontal sinus through mastoids
Sagittal	Bone	2.0 mm		Reformats: Cover all bony structures

**NOTES:**

- LMP on pts of child-bearing age
- Shield children when possible
- Follow GFR and metformin protocol for contrast studies

Any deviation from protocol MUST be Radiologist approved. Rad Director will be notified if this occurs without prior approval.