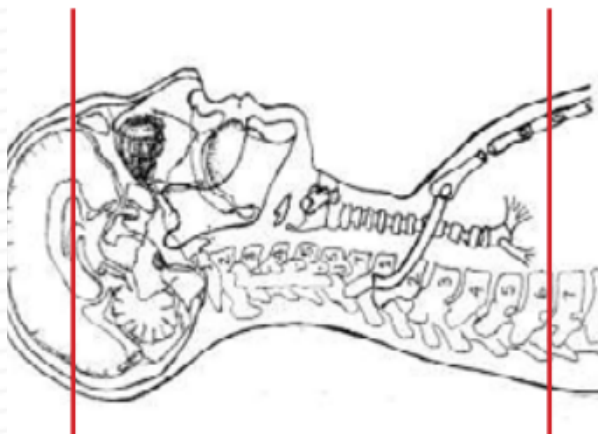


CTA CAROTIDS



Indications	Traumatic vascular injuries, Arterial aneurysms or pseudoaneurysms, venous varices, vasculopathy.
Patient position	Supine, IOML perpendicular to table
Contrast	IV = 100 mL
Injection rate	3.5 mL/sec minimum 20 g prefer 18 g.
Injection site	PREFER IV IN RIGHT ARM
Respiration	Breath hold - no swallowing
Scan parameters	Above Sella turcica through aortic arch.
	ROI in arch
NOTE	Non contrast scan of the neck is NO longer required (change as of Sept 10, 2020)



PLANE	ALGORITHM	THICKNESS	DFOV	
Axial + C	Soft tissue	3.0 mm x 1.5 mm		No greater than 3 mm
Coronal & Sagittal + C	Soft tissue	1.0 mm - 1.5 mm x 0.5 - 0.75 mm		MPR Reformats
R and L OBLIQUE + C	Soft tissue	1.0 mm - 1.5 mm x 0.5 - 0.75 mm		MIP reformat each oblique angled to carotid bulb.

NOTES:

- LMP on pts of child-bearing age
- Shield children when possible
- Follow GFR and metformin protocol for contrast studies

Any deviation from protocol MUST be Radiologist approved. Rad Director will be notified if this occurs without prior approval.