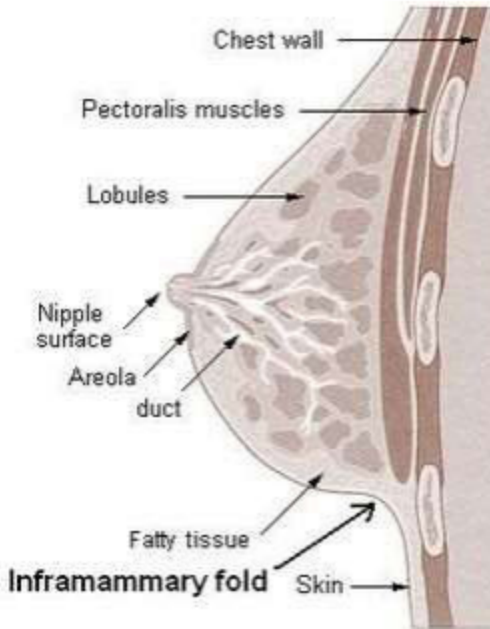


MRI BREAST DYNAMIC



Scan Parameters	Fit to patient
Special notes	Menstrual cycle 5-15 days for routine patients or follow-ups
	Positioning is KEY to breast exam dictation. Ensure there is no inframammary fold at the bottom of the breast. No extreme compression, sharp edges, or folds in the breast tissue.
	No belly skin bulge- pull breast straight for 90 degree angle.

PLANE	Sequence	Fat Sat	Mode	SLT/SP	FOV	NS	GAP	NAQ
Axial	T1	No		4 mm	37 x 24	40	0.8	1
Axial	T2	Yes		4 mm	37 x 24	40	0.8	1
Axial	Pre DYN			2.4 mm	34 x 26	79		1
Axial	DYN			2.4 mm	34 x 26	79		1
Sagittal	HIRES			3 mm	25	83		1