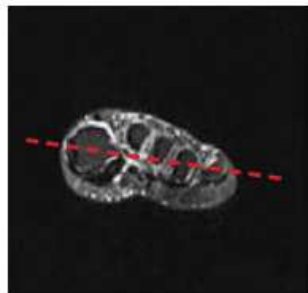


MRI FOREFOOT WITHOUT & WITH CONTRAST

| | |
|-------------------|---|
| Scan Range | Variable according to area of interest/ body part. |
| FOV | Fits to patient/ body part. |
| Position | Supine. Place in foot coil so metatarsals near center. |
| Localizer | 3 plan scout localizer |
| NOTES | REMOVE SOCKS or STOCKINGS if any |

| PLANE | SEQUENCE | FAT SAT | MODE | SLT/SP | FOV | NOTES |
|--------------|----------|---------|------|--------|-----------|-------|
| Sagittal | T1 | | | | small FOV | |
| Axial | STIR | | | | small FOV | |
| Axial | T1 | | | | small FOV | |
| Coronal | T2 | Y | | | small FOV | |
| Sagittal | STIR | | | | small FOV | |
| Axial | PD | Y | | | small FOV | |
| Coronal | T1 | Y | | | small FOV | |
| Coronal + C | T1 | Y | | | small FOV | |
| Sagittal + C | T1 | Y | | | small FOV | |



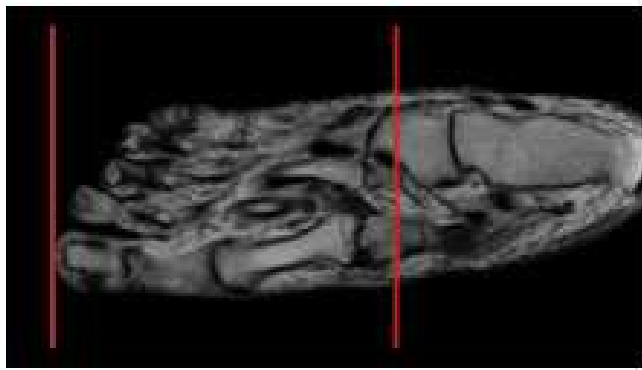
Prescribe AXIALS off sagittal and coronal scout

Example resulting image

AXIALS - LONG AXIS

- Use Sag LOC and angle parallel to the shaft of either the 2nd or 3rd metatarsals and at least cover the soft issues superior and inferior to the MTP joints
- Cover all of the toes and as far proximal as the field of view allows. THIS SHOULD BE TO THE METATARSAL BONES
- Look at the sagittal or longitudinal STIR images before you prescribe the transverse sections so that you can be sure you've covered all the pathology (bright signal on STIR = edema = pathology)

POSITIONING AND PLANES



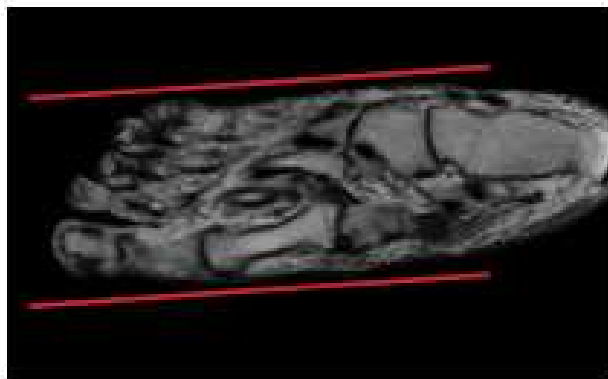
Prescribe CORONAL off axial plane



Example resulting image

CORONAL - SHORT AXIS

- Perpendicular to Axial - long axis
- Angled perpendicular to 2nd metatarsal shaft
- Cover to end of toes



Prescribe SAGITTAL off axial plane



Example resulting image

SAGITTAL

- Parallel to 2nd metatarsal shaft on Axial sequence
- Cover from tips of the toes as far proximal as the FOV allows
- Cover from medial margin of 1st MTP joint as far lateral as the slices go (cover all of the MTP joints)