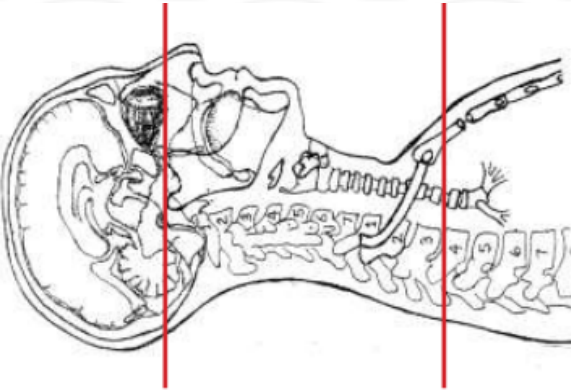


## CT NECK WITH IV CONTRAST



Indications	Soft tissue mass (place marker on ROI), neck swelling.
Patient position	Supine, IOML perpendicular to table
Contrast	IV = 100 mL
Injection rate	2.5 mL/sec minimum 22 g
Respiration	Breath hold
Scan parameters	Sella turcica to T3. Use head FOV

PLANE	ALGORITHM	THICKNESS	DFOV	
Axial + C	Bone	2.0 mm x 2.0 mm	approx 160 - 190 mm	
Axial, Sagittal & Coronal + C	Soft tissue	2.0 mm x 2.0 mm		Reformats
Coronal & Sagittal + C	Bone	2.0 mm x 2.0 mm		Reformats

**NOTES:**

- LMP on pts of child-bearing age
- Shield children when possible
- Follow GFR and metformin protocol for contrast studies

Any deviation from protocol MUST be Radiologist approved. Rad Director will be notified if this occurs without prior approval.