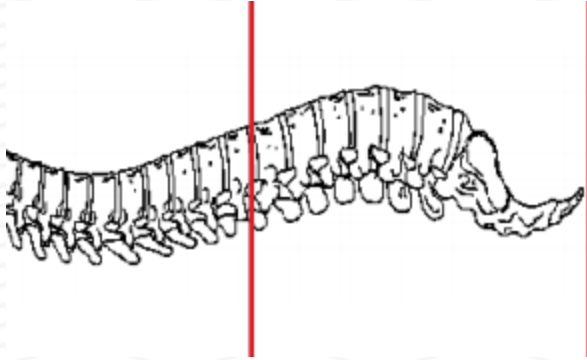
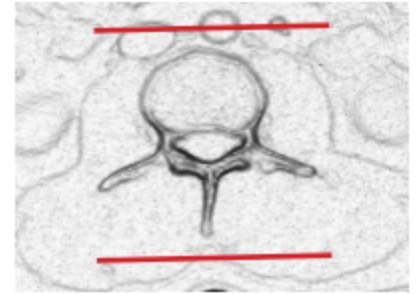
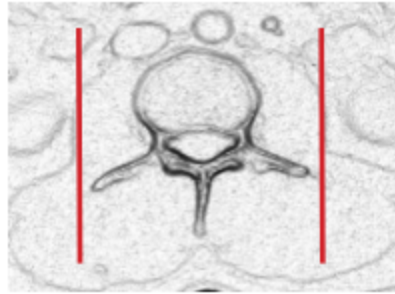
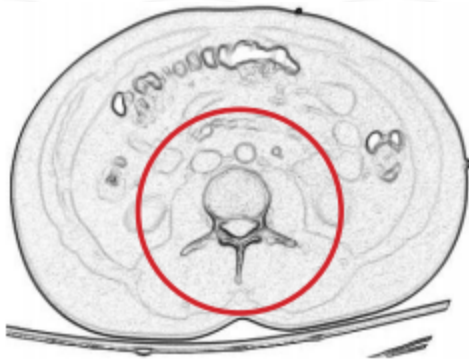


CT LUMBAR SPINE WITHOUT IV CONTRAST



Indications	Trauma. **IF CT C- T- L spine ordered, do as separate scans and use appropriate FOV for each area of the spine.
Patient position	Supine
Contrast	NONE
Injection rate	NONE
Respiration	Breath hold
Scan parameters	T 11 / 12 through coccyx. Use small SFOV



PLANE	ALGORITHM	THICKNESS	DFOV	
Axial	Bone	3.0 mm	approx 180 mm	
Axial	Soft tissue	3.0 mm		
Coronal & Sagittal	Bone	3.0 mm		Reformats

NOTES:

- LMP on pts of child-bearing age
- Shield children when possible
- Follow GFR and metformin protocol for contrast studies

Any deviation from protocol MUST be Radiologist approved. Rad Director will be notified if this occurs without prior approval.