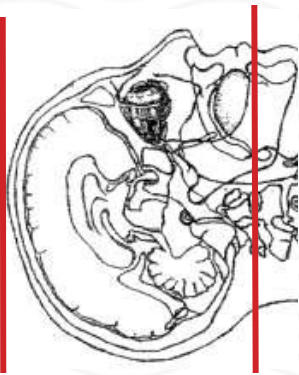


CTA BRAIN

Patient position	Supine, IOML perpendicular to table (have patient tuck chin to chest) see image top left
Contrast	IV = 100 mL contrast
Injection rate	3.5 mL/sec with 7-12 sec delay to scan post contrast
Respiration	Breath hold
Scan parameters	Base of skull to vertex. Use head SFOV
NOTES	<u>SKIP the non-contrast portion IF patient had a non-con head CT WITHIN 6 hours.</u>
EXCEPTION	If patient had tPA administered you are required to do another non-contrast head CT prior to CTA contrast injection.



PLANE	ALGORITHM	THICKNESS	DFOV	
Axial	Brain	5.0 mm	approx 220 mm	
Axial	Bone	5.0 mm		
Coronal & Sagittal	Brain	5.0 mm		Reformats
INJECT CONTRAST	7-12 sec delay	BEFORE SCAN	ARTERIAL PHASE	
Axial + C	Brain	1.25 mm		
Coronal & Sagittal + C	Brain	0.75 mm		Reformats
Axial, sag, cor + C	Brain	10 mm x 2mm		MIPS post contrast

NOTES:

- LMP on pts of child-bearing age
- Shield children when possible
- Follow GFR and metformin protocol for contrast studies

Any deviation from protocol MUST be Radiologist approved. Rad Director will be notified if this occurs without prior approval.