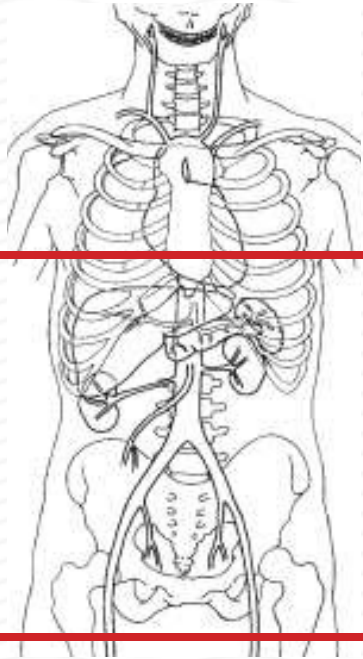


CTA RENAL ARTERY



Indications	evaluation of renovascular hypertension, presurgical planning , vascular interventional planning
Patient Position	Supine
Contrast	Facility specific based on weight/ renal function
Injection rate	20 g or larger in large vein (AC). 4 ml per sec, 120 mL based on weight / renal function.
Respiration	Breath- hold
Scan Parameters	Diaphragm to bottom of femoral heads.

PLANE	ALGORITHM	THICKNESS	DFOV	
Axial	Abdomen	5.0 mm -acquire. Recon @ 2 mm x 0.5 mm		NONCONTRAST
Coronal and Sagittal	Abdomen	Recon at 2mm x 2mm		Reformats of above
Axial + C	Abdomen	3.0 mm -acquire. Recon 2 mm x 0.5 mm		EARLY ARTERIAL BOLUS TRACKING
Coronal and Sagittal + C	Abdomen	2 mm x 2 mm		Reformats of contrast run above
Axial, Coronal and Sagittal + C	MIP	7.0 mm x 2.00 mm		MIPS of early arterial run.
Axial + C	Abdomen	3.0 mm -acquire. Recon 2 mm x 0.5 mm		90 SEC DELAY
Coronal and Sagittal + C	Abdomen	2 mm x 2 mm		Reformats of 90 sec delays