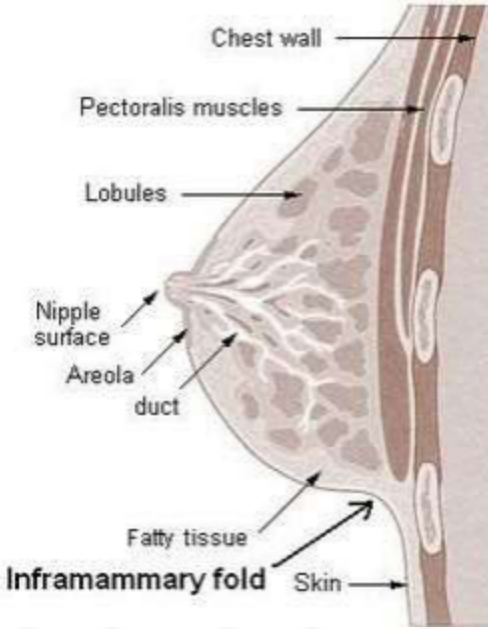


## MRI BREAST IMPLANTS - RUPTURE



Indications	Rule out rupture
Scan Parameters	Fit to patient
Special notes	Menstrual cycle 5-15 days for routine patients or follow-ups
	Positioning is KEY to breast exam dictation. Ensure there is no inframammary fold at the bottom of the breast. No extreme compression, sharp edges, or folds in the breast tissue.
	<b>No belly skin bulge- pull breast straight for 90 degree angle.</b>

PLANE	Sequence	Fat Sat	Mode	SLT/SP	FOV	NS	GAP	NAQ
Axial	STIR	No		4 mm	36 x 25	40	0.8	1
Axial	Silicone sup			4 mm	36 x 25	40	0.8	1
Axial	Saline sup			4 mm	34 x 26	79	0.8	1
Axial	Saline/ FAT sup			4 mm	34 x 26	79	0.8	1