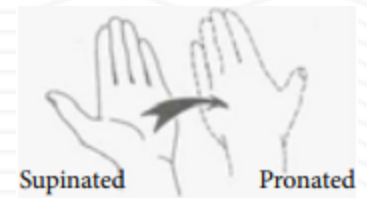
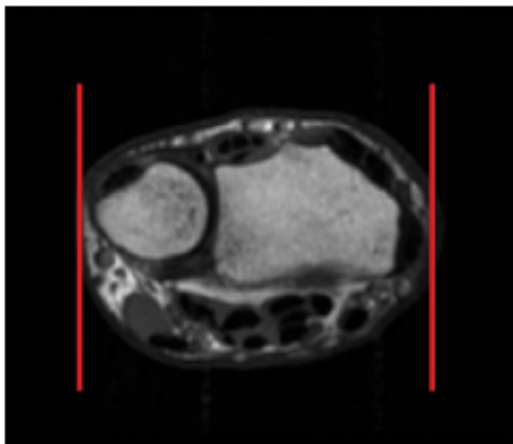


MRI WRIST ARTHROGRAM

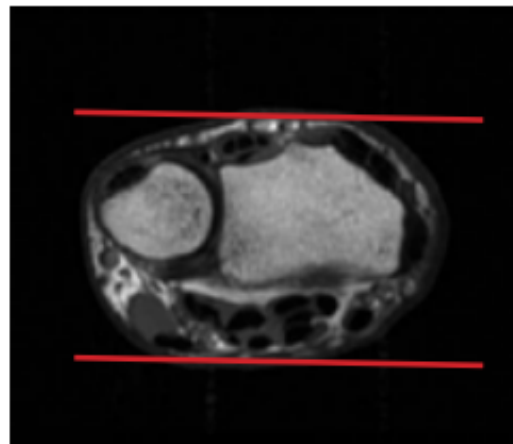
| Scan Range | Variable according to area of interest/ body part. |
|------------|--|
| FOV | Fits to patient/ body part. |
| Position | Wrist to be pronated and in superman position |
| Localizer | 3 plane scout localizer |



| PLANE | SEQUENCE | SLT/ SP | FAT SAT | FOV | NOTES |
|----------------|----------|---------|---------|-----------|---|
| Axial + C | T2 | 3 mm | Y | 8 - 10 cm | angle parallel to long axis of wrist from cor loc |
| Axial + C | T1 | 3 mm | | 8 - 10 cm | angle parallel to long axis of wrist from cor loc |
| Sagittal + C | PD | 3 mm | Y | 10 cm | Perpendicular to axials |
| Coronal + C | T1 | 2 mm | Y | 10 cm | Angle parallel to radius / lunate/ capitate alignment |
| Coronal + C | PD | 2 mm | Y | 10 cm | Angle parallel to radius / lunate/ capitate alignment |
| 3D Coronal + C | PD | | | 10 cm | Angle parallel to radius / lunate/ capitate alignment |



Sagittal Plane



Coronal Plane



Axial Plane