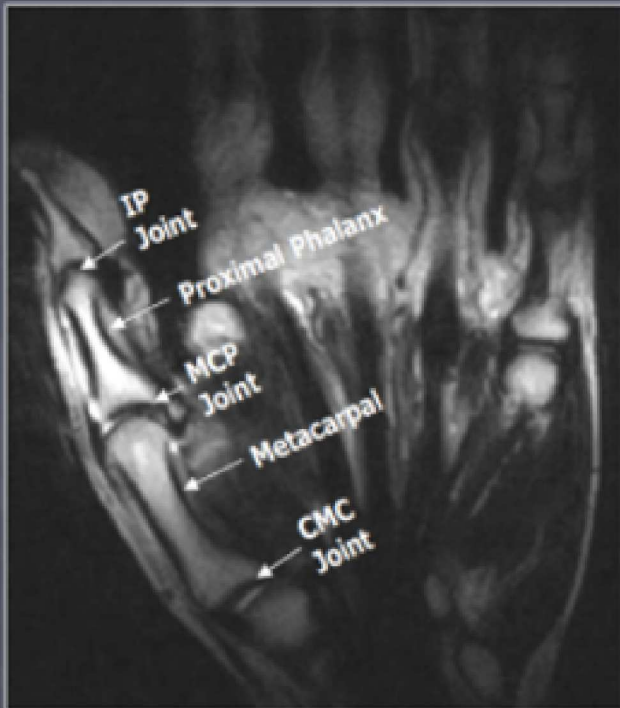


MRI Thumb without contrast

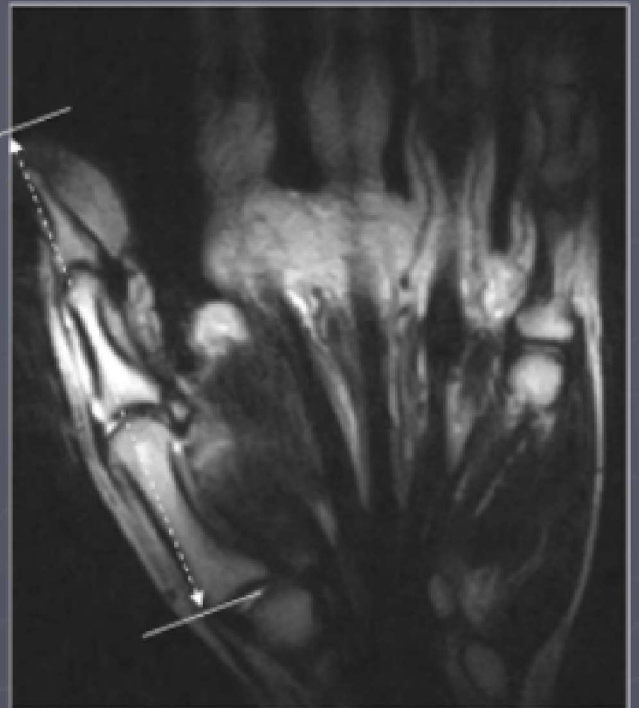
| PLANE | SEQUENCE | TR | TE | SLT/SP | FOV | NOTES |
|----------|----------------|-----------|---------|---------|-------|-------|
| Coronal | PD FSE | >1500 | 30-50 | 3 / 0.3 | 10 | |
| Coronal | T2 FSE FAT SAT | 2000-6000 | 50-70 | 3/0.3 | 10 | |
| Sagittal | FSE STIR | >1500 | 20-40 | 3/0.3 | 10-14 | |
| Axial | T1 SE | 400-800 | minimal | 3/0.3 | 10 | |
| Axial | T2 FSE FAT SAT | 2000-6000 | 50-70 | 3/0.3 | 10 | |

Relevant Anatomy



Axial Imaging Plane

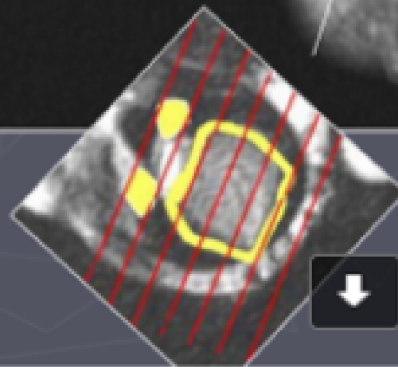
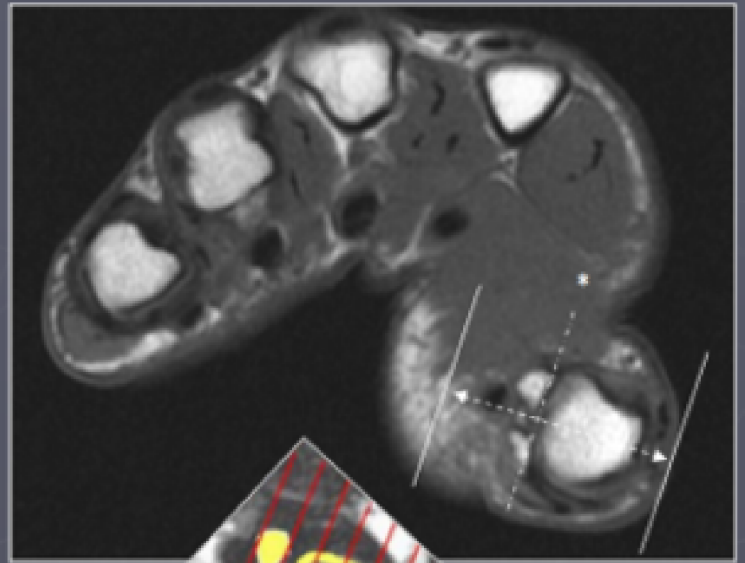
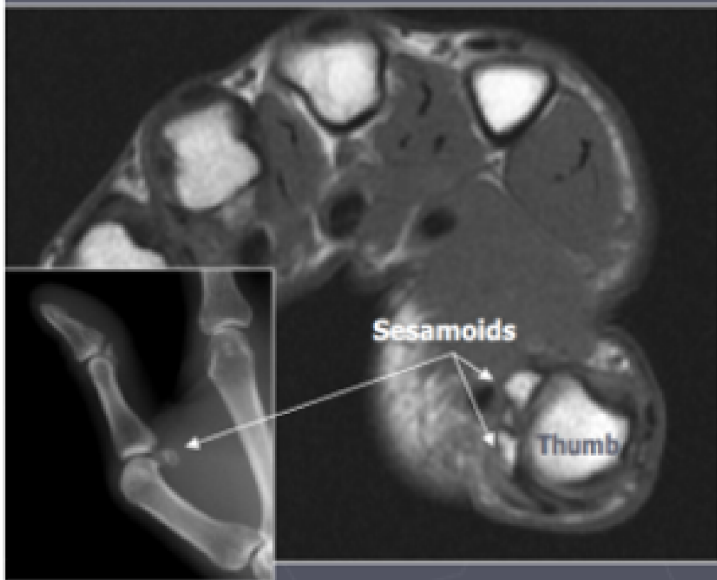
Prescribe plane perpendicular to midshaft of proximal 1st phalanx. Scan from CMC joint through thumb.



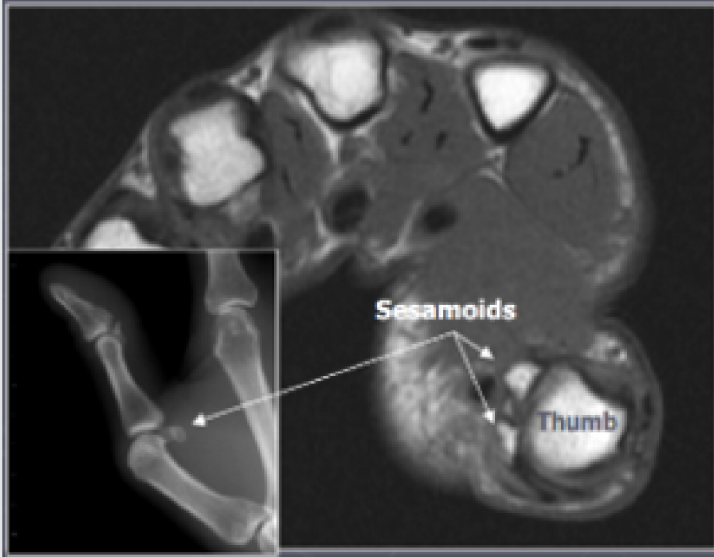
Coronal Imaging Plane

*Prescribe plane with line bisecting sesamoid bones. Scan through entire thumb.

Relevant Anatomy



Relevant Anatomy



Sagittal Imaging Plane

*Prescribe plane perpendicular to coronal imaging plane (©). Scan through entire thumb.

