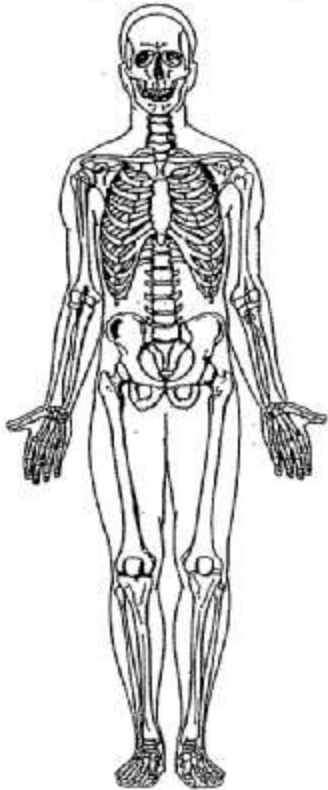


## CT EXTREMITY - MSK



Indications	possible fracture, infection, mass, vascular issue
Exams covered include	Hip, knee, ankle, foot, lower extremity. Shoulder, elbow, wrist, hand, finger, upper extremity.
Scan Parameters	See imaging guide: CT extremity positioning
Contrast	per Radiologist instruction
Injection rate	per Radiologist instruction
Respiration	per protocol / body part
<b>NOTE:</b>	<b>MUST HAVE PLAIN FILMS PRIOR to having the CT.</b>

PLANE	ALGORITHM	THICKNESS	DFOV	
Axial	Soft tissue	2.0 mm x 2.0 mm	pt largest + 4 cm	
Axial	Bone	2.0 mm x 2.0 mm		
Coronal & Sagittal	Bone	2.0 mm x 2.0 mm		Reformats

### **NOTES:**

- LMP on pts of child-bearing age
- Shield children when possible