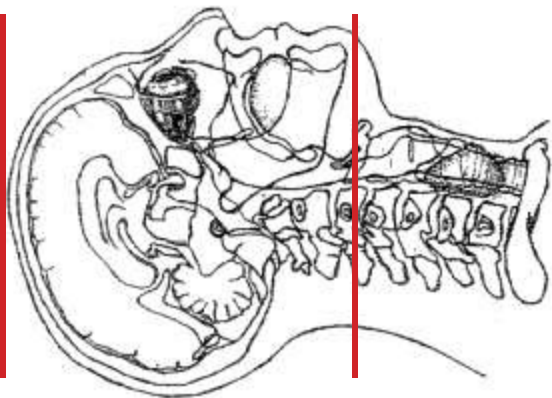


## CT STEALTH PROTOCOL (HEAD / FACIAL BONES WITHOUT IV CONTRAST)



Indications	<b>STEALTH PROTOCOL REQUEST. Pre-surgical planning for sinus surgery</b>
Patient position	Supine, IOML perpendicular to table
Contrast	NONE
Injection rate	NONE
Respiration	Breath hold
Scan parameters	FOV must cover fiducials and/or skull landmarks (tip of nose, ears, chin).
Angle	<b>NO gantry angle</b>

PLANE	ALGORITHM	THICKNESS	DFOV	
Axial	Soft tissue	1.0 mm x 1.0 mm	250 mm	
Axial	Bone	0.75 mm x 0.5 mm	170-190 mm	
Coronal	Bone	1.0 mm x 1.0 mm		Reformats: Frontal sinus through mastoids
Sagittal	Bone	1.0 mm x 1.0 mm		Reformats: Cover all bony structures

### **NOTES:**

- LMP on pts of child-bearing age
- Shield children when possible
- Follow GFR and metformin protocol for contrast studies

Any deviation from protocol MUST be Radiologist approved. Rad Director will be notified if this occurs without prior approval.