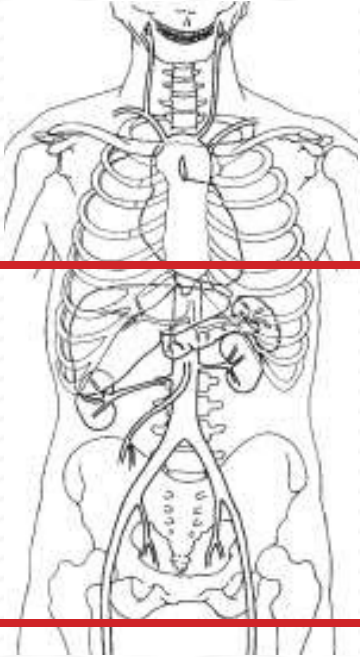


CTA - GI BLEED PROTOCOL



Indications	GI bleed
Patient Position	Supine
Contrast	IV = 100 cc. NO ORAL CONTRAST needed
Injection rate	Facility specific
Respiration	Breath- hold
Scan Parameters	Diaphragm through pubic symphysis

PLANE	ALGORITHM	THICKNESS	DFOV	
Axial	Abdomen	5.0 mm	pt largest + 4 cm	NON CONTRAST
Axial + C	Abdomen	1 -2 mm		ARTERIAL- use bolus tracking
Coronal and Sagittal + C	Abdomen	3 mm		Reformats of arterial contrast run above
MIPS	Abdomen	8 mm / 5 mm		MIPS
Axial + C	Abdomen	1 -2 mm		5 MINUTE DELAY
Coronal and Sagittal + C	Abdomen	3 mm		Reformats of delays

NOTES:

- Use at least 22g needle, preferably 18 g
- Follow GFR and Metformin protocols for contrast studies
- LMP on pts of child-bearing age
- Shield children when possible
- NOT to be used for PTE exam/CT pulmonary angio to r/o PE