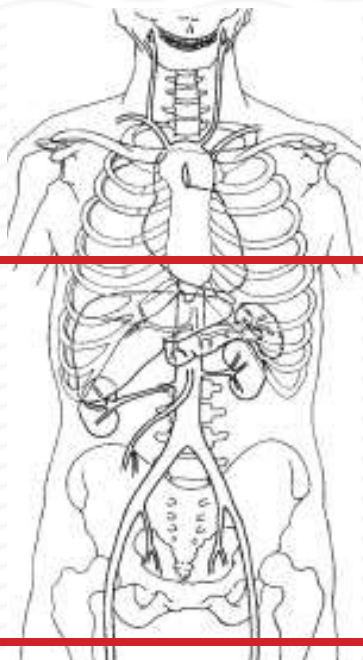


## CTA RENAL ARTERY



<b>Indications</b>	<b>evaluation of renovascular hypertension, presurgical planning , vascular interventional planning</b>
Patient Position	Supine
Contrast	Facility specific based on weight/ renal function
Injection rate	20 g or larger in large vein (AC). 4 ml per sec, 120 mL based on weight / renal function. Prefer 18 g
Respiration	Breath- hold
Scan Parameters	Diaphragm to bottom of femoral heads.

<b>PLANE</b>	<b>ALGORITHM</b>	<b>THICKNESS</b>	<b>DFOV</b>	
Axial + C	Abdomen	3.0 mm		<b>EARLY ARTERIAL BOLUS TRACKING</b>
Coronal and Sagittal + C	Abdomen	2 mm x 2 mm		Reformats of contrast run above
Axial, Coronal + C	MIP	7.0 mm x 2.00 mm		MIPS of early arterial run.
Axial + C	Abdomen	3.0 mm x 3.00 mm		<b>90 SEC DELAY</b>