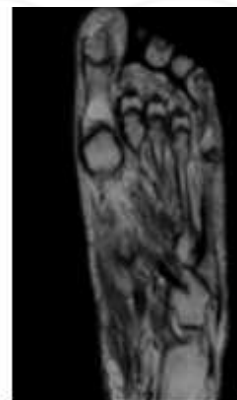
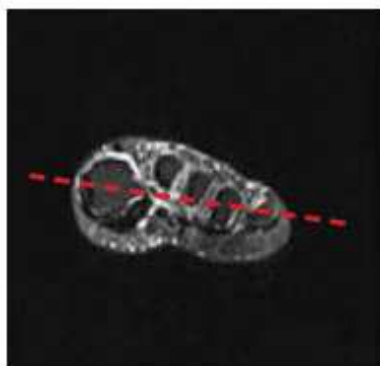


## MRI FOREFOOT WITHOUT CONTRAST

Scan Range	Variable according to area of interest/ body part.
FOV	Fits to patient/ body part.
Position	Prone (if possible especially if question of Morton's neuroma. Place in foot coil so metatarsals near center.
Localizer	3 plane scout localizer
NOTES	<b>REMOVE SOCKS or STOCKINGS if any</b>
	Increase FOV if needed for patient size / pathology
	<b>COVER from forefoot through toes. ALL of foot dorsal to plantar and medial to lateral.</b>

PLANE	SEQUENCE	FAT SAT	MODE	SLT/SP	FOV	NOTES
Axial	T1			3 mm	14 cm	
Axial	PD	Y		3 mm	14 cm	
Axial	STIR			3 mm	14 cm	
Sagittal	STIR			3 mm	14 cm	
Sagittal	T1			3 mm	14 cm	
Coronal	T1			3 mm	14 cm	
Coronal	T2	Y		3 mm	14 cm	



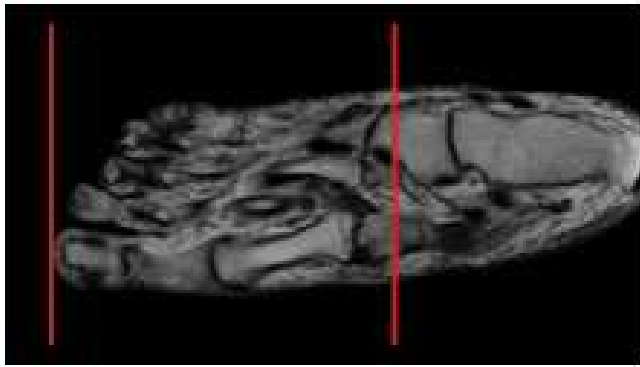
Prescribe AXIALS off sagittal and coronal scout

Example resulting image

### AXIALS - LONG AXIS

- Use Sag LOC and angle parallel to the shaft of either the 2nd or 3rd metatarsals and at least cover the soft issues superior and inferior to the MTP joints
- Cover all of the toes and as far proximal as the field of view allows. THIS SHOULD BE TO THE METATARSAL BONES
- Look at the sagittal or longitudinal STIR images before you prescribe the transverse sections so that you can be sure you've covered all the pathology (bright signal on STIR = edema = pathology)

## POSITIONING AND PLANES



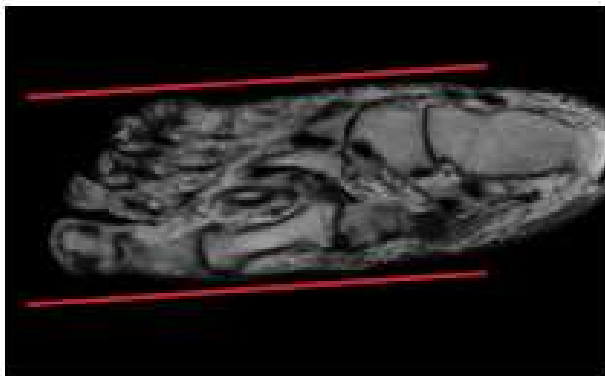
Prescribe CORONAL off axial plane



Example resulting image

### CORONAL - SHORT AXIS

- Perpendicular to Axial - long axis
- Angled perpendicular to 2nd metatarsal shaft
- Cover to end of toes



Prescribe SAGITTAL off axial plane



Example resulting image

### SAGITTAL

- Parallel to 2nd metatarsal shaft on Axial sequence
- Cover from tips of the toes as far proximal as the FOV allows
- Cover from medial margin of 1st MTP joint as far lateral as the slices go (cover all of the MTP joints)