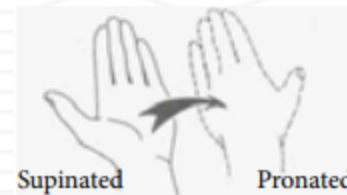
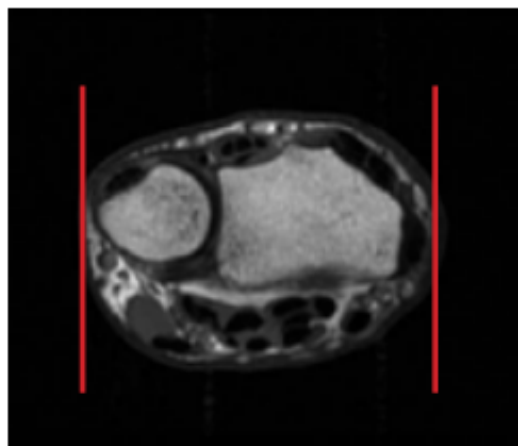


## MRI WRIST ARTHROGRAM

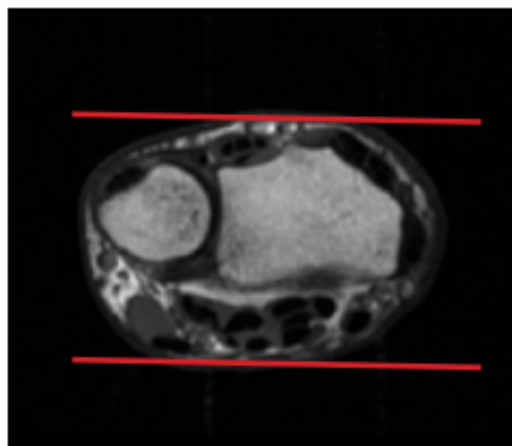
Scan Range	Variable according to area of interest/ body part.
FOV	Fits to patient/ body part.
Position	Wrist to be pronated and in superman position
Localizer	3 plane scout localizer



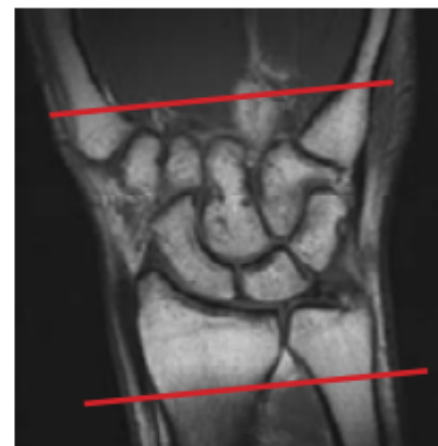
PLANE	SEQUENCE	SLT/ SP	FAT SAT	FOV	NOTES
Axial + C	T2	3 mm	Y	8 - 10 cm	angle parallel to long axis of wrist from cor loc
Axial + C	T1	3 mm		8 - 10 cm	angle parallel to long axis of wrist from cor loc
Sagittal + C	PD	3 mm	Y	10 cm	Perpendicular to axials
Coronal + C	T1	2 mm	Y	10 cm	Angle parallel to radius / lunate/ capitate alignment
Coronal + C	PD	2 mm	Y	10 cm	Angle parallel to radius / lunate/ capitate alignment
3D Coronal + C	PD			10 cm	Angle parallel to radius / lunate/ capitate alignment



Sagittal Plane



Coronal Plane



Axial Plane