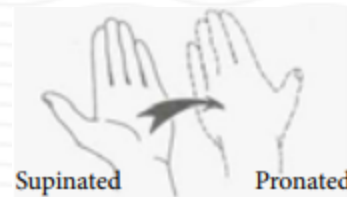
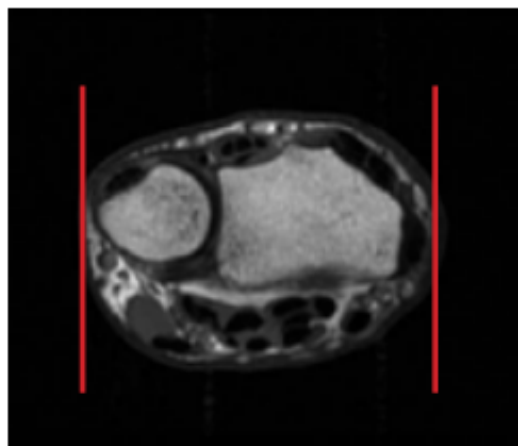


## MRI WRIST WITHOUT CONTRAST

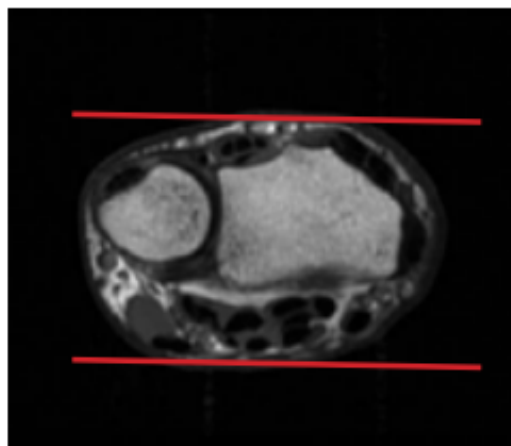
Scan Range	Variable according to area of interest/ body part.
FOV	Fits to patient/ body part.
Position	Wrist to be pronated and in superman position
Localizer	3 plane scout localizer



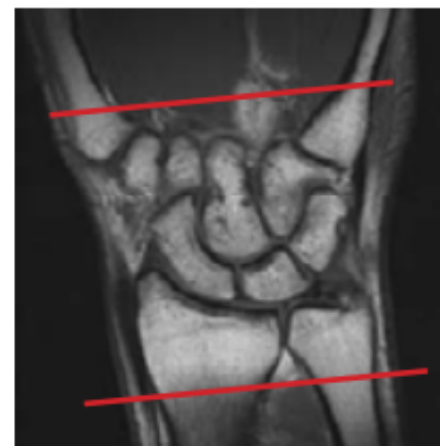
PLANE	SEQUENCE	SLT/ SP	FAT SAT	FOV	NOTES
Axial	T2	3 mm	Y	8 - 10 cm	angle parallel to long axis of wrist from cor loc
Axial	T1	3 mm		8 - 10 cm	angle parallel to long axis of wrist from cor loc
Sagittal	T2	3 mm	Y	10 cm	Perpendicular to axials
Coronal	T1	2 mm		10 cm	Angle parallel to radius / lunate/ capitate alignment
Coronal	T2	2 mm	Y	10 cm	Angle parallel to radius / lunate/ capitate alignment
3D Coronal	FE			10 cm	Angle parallel to radius / lunate/ capitate alignment



Sagittal Plane



Coronal Plane



Axial Plane