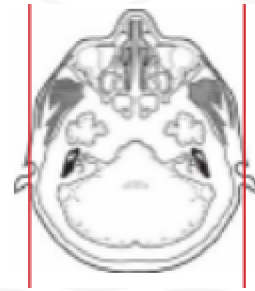
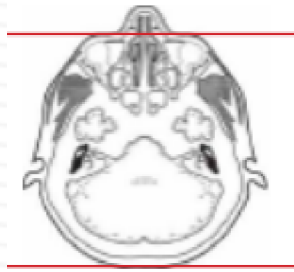
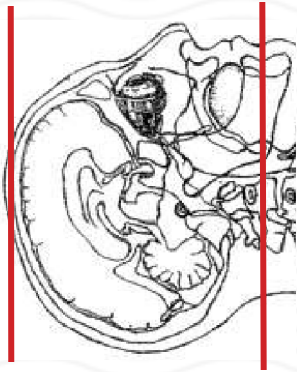


CTA BRAIN

| | |
|--------------------|---|
| Patient position | Supine, IOML perpendicular to table (have patient tuck chin to chest) see image top left |
| Contrast | IV = 100 mL contrast |
| Injection rate | 3.5 mL/sec with 7-12 sec delay to scan post contrast |
| Respiration | Breath hold |
| Scan parameters | Base of skull to vertex. Use head SFOV |
| IMPORTANT!! | A CT head without contrast is REQUIRED PRIOR to this protocol. This CT head without must be performed independently of the CTA protocol and within 6 hours of injecting contrast. Independent = separate accession # outside of the CTA to determine if additional imaging is medically necessary. |
| IMPORTANT!! | If patient had tPA administered you are required to do another independent, non-contrast head CT prior to CTA contrast injection. Independent = separate accession # outside of the CTA to determine if additional imaging is medically necessary. |



| PLANE | ALGORITHM | THICKNESS | DFOV | |
|------------------------|----------------|-------------|----------------|--------------------|
| INJECT CONTRAST | 7-12 sec delay | BEFORE SCAN | ARTERIAL PHASE | |
| Axial + C | Brain | 1.25 mm | | |
| Coronal & Sagittal + C | Brain | 0.75 mm | | Reformats |
| Axial, sag, cor + C | Brain | 10 mm x 2mm | | MIPS post contrast |

NOTES:

- LMP on pts of child-bearing age
- Shield children when possible
- Follow GFR and metformin protocol for contrast studies

Any deviation from protocol MUST be Radiologist approved. Rad Director will be notified if this occurs without prior approval.