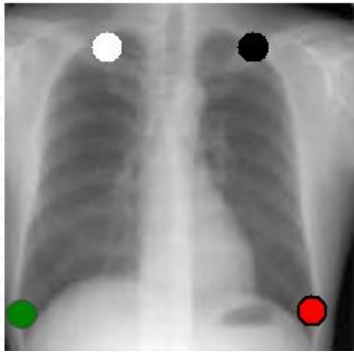
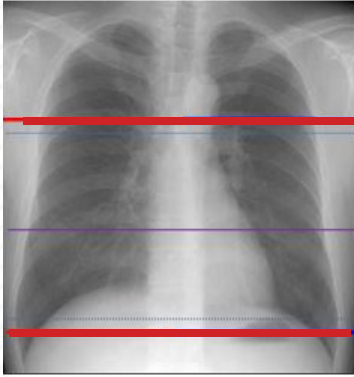


CTA CARDIAC with Calcium scoring



Indications	CAD (coronary artery disease) , anomalous coronary artery , chest pain in low to intermediate risk patient , congenital heart disease , ischemic heart disease
Patient Position	Supine
Contrast	Facility specific; contrast amount determined by weight and renal function
Injection rate	5 ml / sec. 18 g PIV preferred, 20 g min. Order of location preference: Right AC, Right mid forearm, Left AC, Left mid forearm. All other locations are unacceptable for cardiac CTA.
Respiration	Breath- hold
Scan Parameters	2 cm below carina - base of heart. See top image on left.
Gating	See bottom image on left.
NOTE:	The heart-rate must be below 65 bpm to properly perform this study.

PLANE	ALGORITHM	THICKNESS	DFOV	
Axial	Soft tissue	3 mm x 3 mm		Calcium score
Axial + C	Soft tissue	3 mm x 3 mm		Gated
Coronal and Sagittal + C	Soft tissue	2 mm x 2 mm		Reformats of contrast run above
Axial + C	Soft tissue	1.0 mm x 2.00 mm		MIPS
Axial + C	Soft tissue	1.0 mm x 1.0 mm		recons