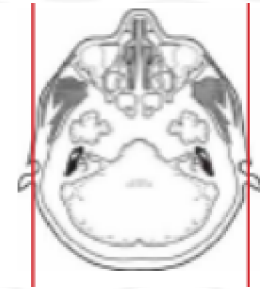
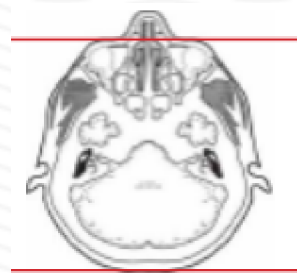
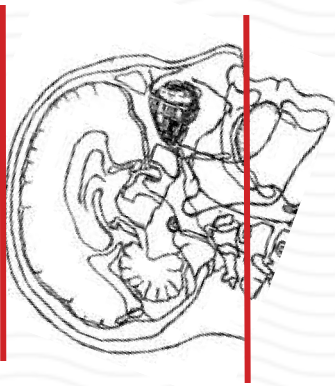


CTV BRAIN

Indications	dural venous sinus thrombosis, vascular malformations, idiopathic intracranial hypertension
Patient position	Supine, IOML perpendicular to table (have patient tuck chin to chest)
Contrast	IV = 100 mL contrast
Injection rate	4 mL/sec with 45 sec delay to scan
Respiration	Breath hold
Scan parameters	Base of skull to vertex. Use head SFOV
NOTES	<u>MUST HAVE CT HEAD WITHOUT FIRST</u>
	Must be ordered / billed as CTA but have notes to indicate reason for CTV
	Required to have 3D renderings of venous system



PLANE	ALGORITHM	THICKNESS	DFOV	
Axial	Brain	5.0 mm	approx 220 mm	
Axial	Bone	5.0 mm		
Coronal & Sagittal	Brain	5.0 mm		Reformats
INJECT CONTRAST	45 sec delay	BEFORE SCAN		
Axial + C	Brain	1.25 mm		
Coronal & Sagittal + C	Brain	0.75 mm		Reformats
Axial, sag, cor + C	Brain	10 mm x 2mm		MIPS post contrast

NOTES:

- LMP on pts of child-bearing age
- Shield children when possible
- Follow GFR and metformin protocol for contrast studies

Any deviation from protocol MUST be Radiologist approved. Rad Director will be notified if this occurs without prior approval.