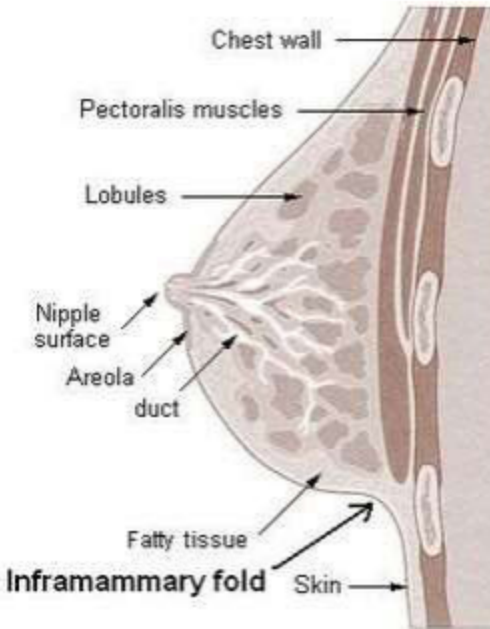


MRI BREAST IMPLANTS (ROUTINE) without & with



Scan Parameters	Fit to patient
Indications	Screening or cancer workup
Special notes	Pt must have scan 5-15 days from the start of their menstrual cycle for routine patients or follow-ups.
	Newly diagnosed cancer patient do NOT need to follow the menstrual cycle rule.
ATTENTION:	Positioning is KEY to breast exam dictation. Ensure there is no inframammary fold at the bottom of the breast. No extreme compression, sharp edges, or folds in the breast tissue.
	No belly skin bulge- pull breast straight for 90 degree angle.
Number of slices	Dependent on patient breast size.

PLANE	Sequence	Fat Sat	MATRIX	SLT/SP	FOV	GAP	PHASES	NOTES
Axial	STIR (silicone sup)			4 mm	36 x 25	0.8		silicone suppressed
Axial	STIR (bright silicone)			4 mm	36 x 25	0.8		water & fat suppressed with bright silicone
Axial	STIR			4 mm	36 x 25	0.8		
Axial	Pre DYNAMIC			2.4 mm	34 x 26			
Axial + C	DYNAMIC			2.4 mm	34 x 26		4 phases	
Sagittal + C	HIRES		320	3 mm	25			

Contrast:

Dynamic scan time 1 minute - 1 minute, 30 seconds each phase.

Delay for contrast 20 sec.