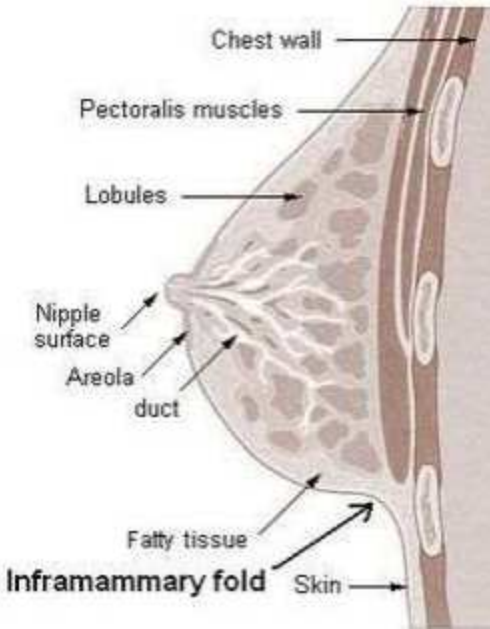


## MRI BREAST IMPLANTS (RUPTURE) - without only



Indications	Rule out rupture
Scan Parameters	Fit to patient
Special notes	Menstrual cycle 5-15 days for routine patients or follow-ups
	Positioning is KEY to breast exam dictation. Ensure there is no inframammary fold at the bottom of the breast. No extreme compression, sharp edges, or folds in the breast tissue.
	<b>No belly skin bulge- pull breast straight for 90 degree angle.</b>
Number of slices	Dependent on breast size.

PLANE	Sequence	Fat Sat	SLT/SP	FOV	GAP	NOTES
Axial	STIR	No	4 mm	36 x 25	0.8	
Axial	Silicone sup		4 mm	36 x 25	0.8	
Axial	Saline sup		4 mm	34 x 26	0.8	
Axial	STIR	<b>water sat</b>	4 mm	36 x 25	0.8	Bright silicone
Sagittal LEFT	STIR	<b>water sat</b>	4 mm	26 x 26	0.8	
Sagittal RIGHT	STIR	<b>water sat</b>	4 mm	26 x 26	0.8	
Coronal	Silicone sup	<b>water sat</b>	4 mm	36 x 25	0.8	