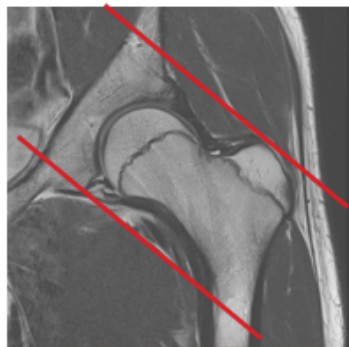
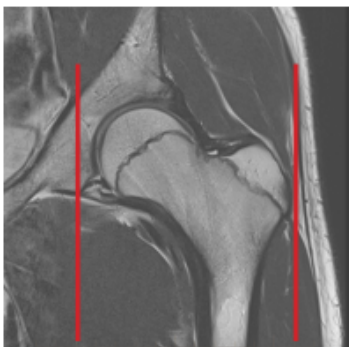
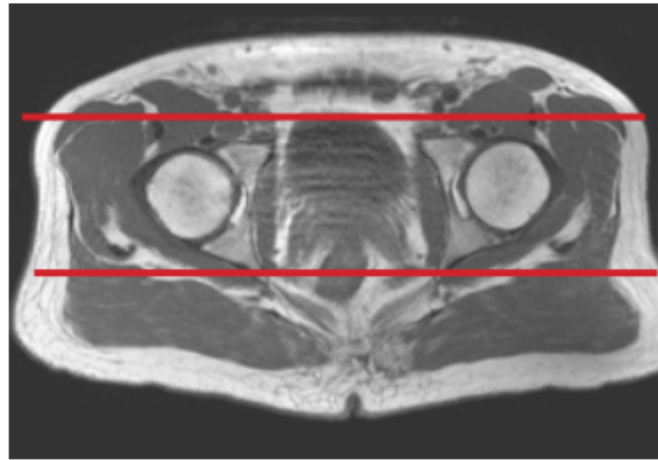
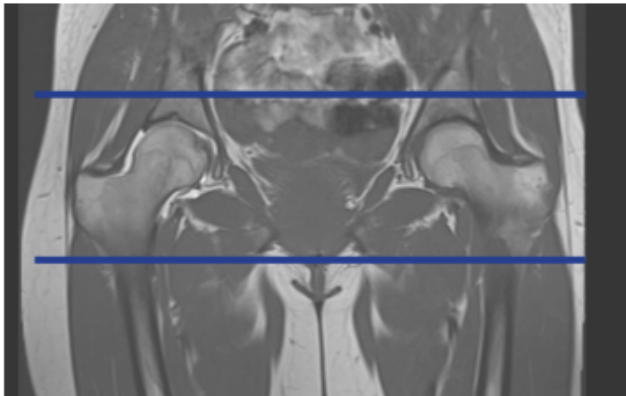


## MRI HIP ARTHROGRAM

Patient Position	Supine- feet internally rotated and patient comfortable with sponges
FOV	Fits to patient/ body part
Localizer	3 plane scout localizer

PLANE	SEQUENCE	FAT SAT	FOV	NOTES
Coronal + C	T1		Full FOV	entire pelvis
Coronal + C	STIR		Full FOV	entire pelvis
Coronal + C	PD	Y	small FOV	approx 1 slice anterior to and 1 slice posterior to acetabulum
Coronal + C	T1	Y	small FOV	approx 1 slice anterior to and 1 slice posterior to acetabulum
Sagittal + C	PD	Y	small FOV	approx from outer cortex of greater trochanter to the inner portion of the acetabulum
Axial oblique + C	T2	Y	small FOV	approx 1 slice out of acetabulum superiorly to 1 slice out of acetabulum inferiorly



Any deviation from protocol MUST be Radiologist approved. Rad Director will be notified if this occurs without prior approval.