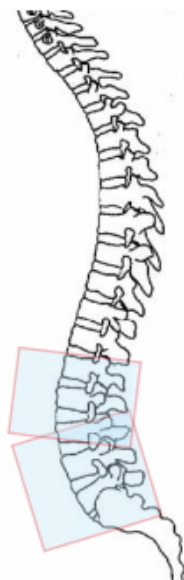


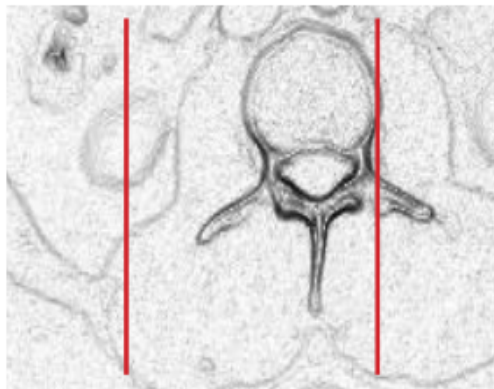
## MRI L-SPINE WITHOUT & WITH CONTRAST

<b>Indications</b>	<b>Tumor, infection, metastasis, discitis, osteomyelitis, post-op hx of back surgery (excluding vertebroplasty)</b>
<b>Localizer</b>	3 plane scout
<b>Note</b>	Any patient that had prior lumbar surgery <b>MUST</b> be scanned without and with contrast. Contact the Radiologist if ordered without prior to scanning the patient.
	<b>Contact the Radiologist if the patient has multi-level spine studies ordered before performing any of the studies.</b>

PLANE	SEQUENCE	FAT SAT	SLT/SP	FOV	NOTES
Sagittal	T2		4 / 1	28 cm	Cover from T12 through S2
Sagittal	T1		4 / 1	28 cm	Cover from T12 through S2
Sagittal	STIR		4 / 1	28 cm	Cover from T12 through S2
Axial	T1	Y	4 / 1	16 - 18 cm	Scan axials as 2 continuous blocks through L spine. 1. T12-L2/3, angle to L2. 2. L3-S1, angle to L4/5.
Axial	T2		4 / 1	16 - 18 cm	Scan axials as 2 continuous blocks through L spine. 1. T12-L2/3, angle to L2. 2. L3-S1, angle to L4/5.
Axial + C	T1	Y	4 / 1	16 - 18 cm	These may need to be scanned separately if you experience cross-talk/artifact. Do not prescribe axials in one single block without prior radiologist approval.
Sagittal + C	T1	Y	4 / 1	28 cm	



- Abnormalities should be in one stack of axials.
- Do not place the end or beginning of the stack within the abnormality!



Any deviation from protocol **MUST** be Radiologist approved. Rad Director will be notified if this occurs without prior approval.