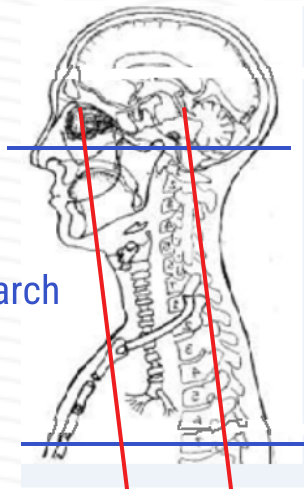


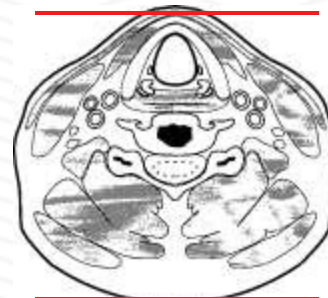
## MRI NECK WITHOUT & WITH CONTRAST

Use this protocol for the following:	THYROID/CERVICAL TRACHEA AND CERVICAL ESOPHAGUS
<b>Scan Range</b>	<b>Variable according to area of interest/ body part.</b>
FOV	Fits to patient/ body part
Notes	Use skin marker over area of tenderness if no palpable mass and above / below area of mass

PLANE	SEQUENCE	FAT SAT	MODE	SLT/SP	FOV	NOTES
Axial	T1	No		3.0 / 0	240 mm	
Axial	T2	No		3.0 / 0	240 mm	
Coronal angled	T2	Yes		3.0 / 0	240 mm	
Axial	DWI	No		3.0 / 0	240 mm	
Sagittal	T2	No		3.0 / 0	240 mm	
Axial	T1	Yes				
<b>Inject contrast</b>						
Axial + C	T1	Yes		3.0 / 0	240 mm	
Coronal angled + C	T1			3.0 / 0	240 mm	
Sagittal + C	T1	Yes		3.0 / 0	240 mm	



Hard palate to below aortic arch



Any deviation from protocol MUST be Radiologist approved. Rad Director will be notified if this occurs without prior approval.