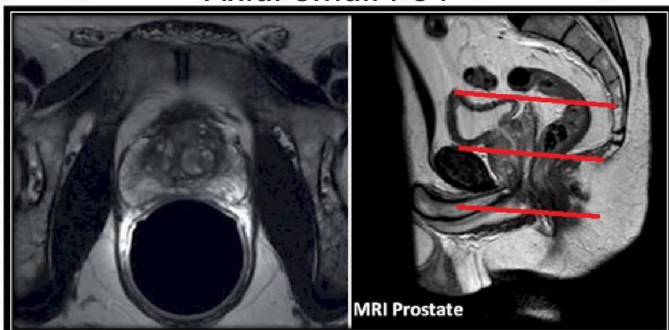


MRI PROSTATE WITHOUT & WITH CONTRAST

Patient Position	Supine-arms out of FOV
FOV	Fits to patient/ body part (~350 mm)
	Scanner MUST be capable of Small FOV
Localizer	3 plane scout localize
Scan Range	Encompass the entire prostate gland and the seminal vesicles
Breathing	Scan on Expiration
NOTE:	#1 Pts with a hip prosthesis, use a propeller or metal artifact reduction technique
	#2 Have pt empty bladder prior to scan

PLANE	SEQUENCE	FAT SAT	SLT/SP	FOV	NOTES
Axial	T2	Y	5 / 1	350 mm	
Axial	DWI b1000, b500 - ADC maps		<4 / 0		
Axial	T1	Y	5 / 1	350 mm	
Axial	T2 FSE	N	3/1	Small FOV (~18)	High resolution
Sagittal	T2 FSE	N	3/1	Small FOV	High resolution
Coronal	T2 FSE	N	3/1	Small FOV	High resolution
Coronal	T2	N	5 / 1	350 mm	
Coronal	T1	Y	5 / 1	350 mm	
Sagittal	T1	Y	5 / 1	350 mm	
INJECT					
Axial + C	T1	Y	3 / 1	350 mm	Post contrast scans: 30 sec delay, 3 min delay
Sagittal + C	T1	Y	5 / 1	350 mm	3 minute delay

Axial Small FOV



Coronal Small FOV

