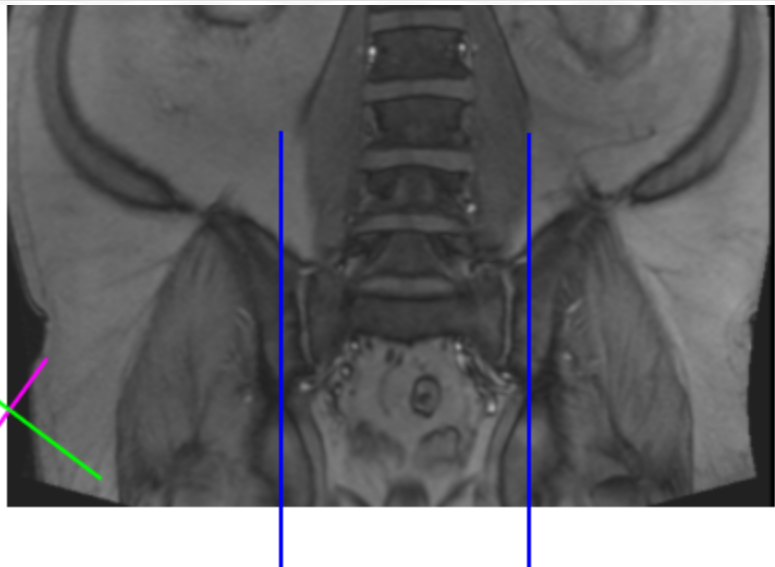
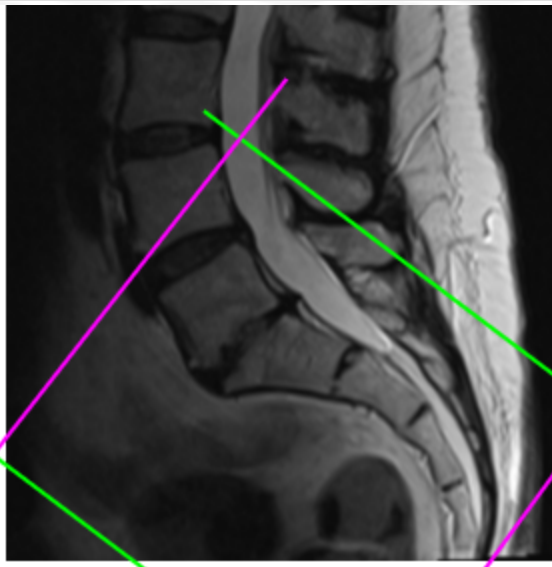


## MRI SACRUM WITHOUT & WITH CONTRAST

<b>Indications</b>	<b>Sacral fracture, sacral mass, SI joint infection, NOT for female reproductive or ovarian complaints.</b>
<b>Patient Position</b>	Supine- feet internally rotated and patient made comfortable with sponges. Do not rotate if suspicion of femoral neck / hip fx.
<b>FOV</b>	Fits to patient/ body part
<b>Localizer</b>	3 plane scout localize
<b>Notes</b>	Include both sides of sacrum for the Sagittal sequences



PLANE	SEQUENCE	FAT SAT	MODE	SLT/SP	FOV	NOTES
Sagittal	T1			4 / 1	Approx 220 mm	
Axial oblique	T1			4 / 1	Approx 180 mm	
Axial oblique	T1	Y		4 / 1	Approx 180 mm	
Sagittal	STIR TSE			4 / 1	Approx 220 mm	
Coronal oblique	STIR TSE			4 / 1	Approx 180 mm	
<b>INJECT CONTRAST</b>				4 / 1		
Sagittal + C	T1	Y		4 / 1	Approx 220 mm	
Axial oblique + C	T1	Y		4 / 1	Approx 180 mm	

Any deviation from protocol MUST be Radiologist approved. Rad Director will be notified if this occurs without prior approval.