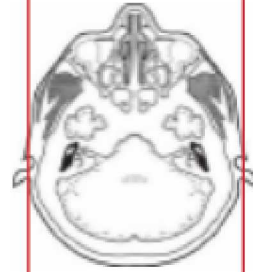
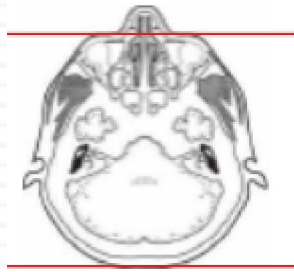
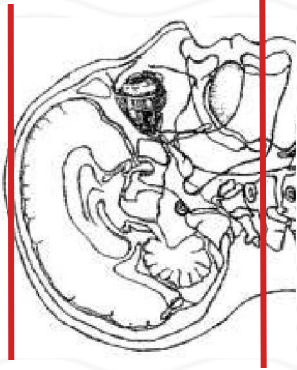


CTA BRAIN

Patient position	Supine, IOML perpendicular to table (have patient tuck chin to chest) see image top left
Contrast	IV = 100 mL contrast
Injection rate	3.5 mL/sec with 7-12 sec delay to scan post contrast
Respiration	Breath hold
Scan parameters	Base of skull to vertex. Use head SFOV
IMPORTANT!!	A CT head without contrast is REQUIRED PRIOR to this protocol for STROKE patients. This CT head without must be performed independently of the CTA protocol and within 6 hours of injecting contrast. Independent = separate accession # outside of the CTA to determine if additional imaging is medically necessary. Routine outpatients do not require the CT head without contrast in a separate acc#.
IMPORTANT!!	If patient had tPA administered you are required to do another independent, non-contrast head CT prior to CTA contrast injection. Independent = separate accession # outside of the CTA to determine if additional imaging is medically necessary.



PLANE	ALGORITHM	THICKNESS	DFOV	
INJECT CONTRAST	7-12 sec delay	BEFORE SCAN	ARTERIAL PHASE	
Axial + C	Brain	1.25 mm		
Coronal & Sagittal + C	Brain	0.75 mm		Reformats
Axial, sag, cor + C	Brain	10 mm x 2mm		MIPS post contrast

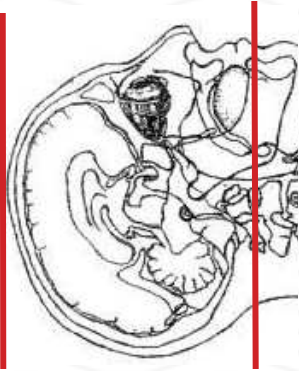
NOTES:

- LMP on pts of child-bearing age
- Shield children when possible
- Follow GFR and metformin protocol for contrast studies

Any deviation from protocol MUST be Radiologist approved. Rad Director will be notified if this occurs without prior approval.

CTA BRAIN

Patient position	Supine, IOML perpendicular to table (have patient tuck chin to chest) see image top left
Contrast	IV = 100 mL contrast
Injection rate	3.5 mL/sec with 7-12 sec delay to scan post contrast
Respiration	Breath hold
Scan parameters	Base of skull to vertex. Use head SFOV
NOTES	<u>SKIP the non-contrast portion IF patient had a non-con head CT WITHIN 6 hours.</u>
EXCEPTION	If patient had tPA administered you are required to do another non-contrast head CT prior to CTA contrast injection.



PLANE	ALGORITHM	THICKNESS	DFOV	
Axial	Brain	5.0 mm	approx 220 mm	
Axial	Bone	5.0 mm		
Coronal & Sagittal	Brain	5.0 mm		Reformats
INJECT CONTRAST	7-12 sec delay	BEFORE SCAN	ARTERIAL PHASE	
Axial + C	Brain	1.25 mm		
Coronal & Sagittal + C	Brain	0.75 mm		Reformats
Axial, sag, cor + C	Brain	10 mm x 2mm		MIPS post contrast

NOTES:

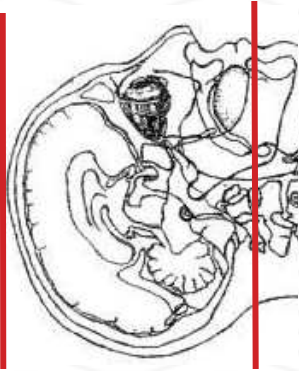
- LMP on pts of child-bearing age
- Shield children when possible
- Follow GFR and metformin protocol for contrast studies

Any deviation from protocol MUST be Radiologist approved. Rad Director will be notified if this occurs without prior approval.

CTA BRAIN

**Revised Jan 2025 to
 remove CT head
 without into sep acc.**

Patient position	Supine, OML perpendicular to table (have patient tuck chin in chest - see image top left)
Contrast	IV = 100 mL contrast
Injection rate	3 mL/sec with 7-12 sec delay to scalp post contrast
Respiration	Breath hold
Scan parameters	Brain, skull, v. max. Use head SFO
NOTES	<u>SKIP the non-contrast portion IF patient had a non-con head CT WITHIN 6 hours.</u>
EXCEPTION	If patient had tPA administered you are required to do another non-contrast head CT prior to CTA contrast injection.



PLANE	ALGORITHM	THICKNESS	DFOV	
Axial	Brain	5.0 mm	approx 220 mm	
Axial	Bone	5.0 mm		
Coronal & Sagittal	Brain	5.0 mm		Reformats
INJECT CONTRAST	7-12 sec delay	BEFORE SCAN	ARTERIAL PHASE	
Axial + C	Brain	1.25 mm		
Coronal & Sagittal + C	Brain	0.75 mm		Reformats
Axial, sag, cor + C	Brain	10 mm x 2mm		MIPS post contrast

NOTES:

- LMP on pts of child-bearing age
- Shield children when possible
- Follow GFR and metformin protocol for contrast studies

Any deviation from protocol MUST be Radiologist approved. Rad Director will be notified if this occurs without prior approval.